



> PRINT > COPY > SCAN > FAX

**TASKalfa 3501i**

**TASKalfa 4501i**

**TASKalfa 5501i**

BLACK AND WHITE  
A3 MULTIFUNCTIONALS



RELIABLE  
ALL-ROUNDERS  
FOR BUSY  
OFFICES



# SIMPLIFY YOUR OFFICE ROUTINE

For those who want fast, efficient and high quality black and white document management, KYOCERA has developed a range of highly reliable multifunctionals. These MFPs are built using KYOCERA's renowned long-life component technology, significantly reducing the total cost of ownership, as well as enhancing productivity with virtually no downtime and the highest levels of reliability throughout the life of the device.

## SPEED AND QUALITY **ALL IN ONE.**

Whether you need to print, copy, scan or fax, these productive and easy-to-use devices handle all your projects quickly and professionally. We offer a wide range of basic and optional functions to enhance workflows. These include fast black and white printing up to 55 ppm and optional one path duplex scanning at an impressive 160 ipm.

High-capacity finishing solutions and standard high-capacity of paper supplies offer uninterrupted productivity for high volume workloads. Individually selectable paper cassettes with capacities of up to 7,150 sheets, enable you to easily print large volumes. What's more, the device is capable of printing on wide range of paper sizes up to 305 x 1,220 mm and specialist media, with weights up to 300gsm.

To reduce your environmental footprint, we have developed a unique technology that makes this new TASKalfa series considerably more energy efficient by using energy only when required. All the parts assembled in our MFPs have been designed to provide productive, high quality monochrome document output whilst keeping the downtime to an absolute minimum.



## PRODUCT SUMMARY

- > UP TO 55 A4 PAGES PER MINUTE.
- > STANDARD NETWORK PRINTING AND COLOUR SCANNING.
- > TIME TO FIRST COPY 3.2 SECONDS (TASKalfa 5501i).
- > UP TO 2 GB RAM + 160 GB HDD MEMORY AND STORAGE.
- > EXPANDABLE FAX FUNCTIONS\*: DUAL FAX, NETWORK FAX, AND INTERNET FAX.
- > SELECTABLE ONE-PATH DUPLEX AND REVERSING DOCUMENT PROCESSOR.\*
- > INDIVIDUAL PAPER HANDLING INCLUDING PRODUCTIVE FINISHING OPTIONS AND VARIOUS PAPER FEEDERS FOR UP TO 7,150 SHEETS.
- > SECURITY ORIENTED: DATA SECURITY KIT\*: COPY GUARD KIT\*: INTEGRATED SUPPORT FOR ID CARD AUTHENTICATION AND MULTIPLE CARD TECHNOLOGIES.
- > LONG-LIFE COMPONENTS PROVIDE EXCEPTIONAL EFFICIENCY, RELIABILITY AND LESS WASTE.

\* OPTIONAL.

---



# SHARP CONTRASTS FOR A PERFECT PRESENTATION

The TASKalfa is equipped with a high image processing engine embedded in the device that generates sharp contrast and quality. The multifunctionals come with the equivalent of a 9,600 dpi resolution as standard, which ensures that all your documents will be of exceptional clarity.

---

You can access all settings for printing, copying and scanning as well as the optional fax function from the new colour touch panel. The large size of the panel and its ease of use ensure that your employees can easily select the functions they want to use.



## PRODUCT HIGHLIGHT



### ONE TOUCH ACCESS

Frequently used features are only a click away

### ACCESSIBILITY DISPLAY

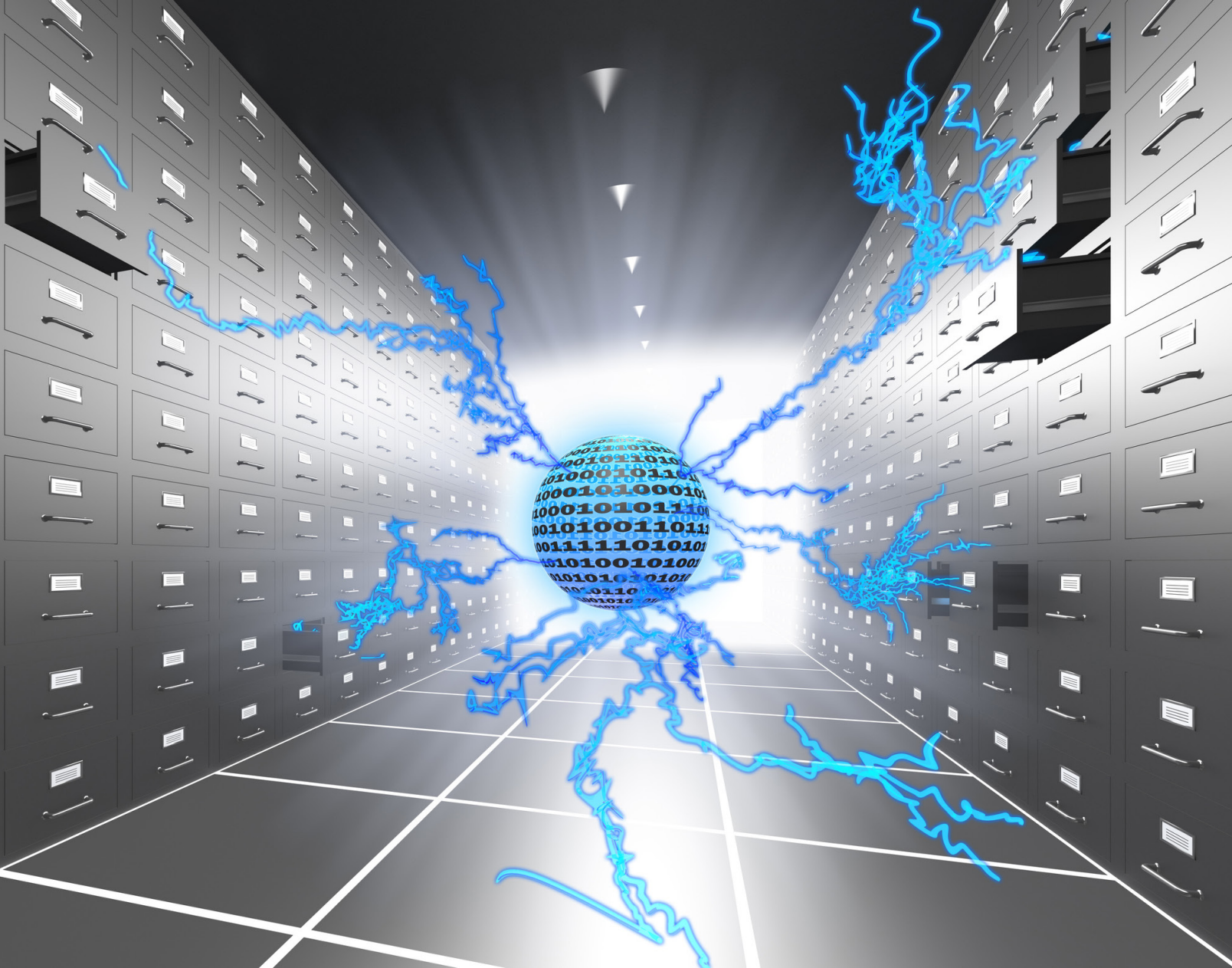
Magnified control panel capabilities for visually impaired

### HOME KEY

Easily access your customised control panel home page with this hard key

---





# TURN YOUR PAPER DOCUMENTS INTO DIGITAL FILES

## FAST SCANNING INSTEAD OF RETYPING.

Our devices offer high-speed support when you need to turn your paper documents into digital files. With an A4 scanning speed of up to 160 ipm in black and white, and 80 ipm in colour, at a resolution of 300 dpi, you will find your project gets done to a great quality and at maximum speed.

The one-pass optional duplex document processor captures paper documents and converts them to flexible formats which are ready for digital re-use.

Scanning options include colour scanning to a server, scanning direct to e-mail or scanning to USB. It comes with a choice of the most commonly used formats such as PDF, JPEG, TIFF or XPS.

To simplify your daily office life even more, you can choose a TASKalfa with the ability to turn scanned documents into searchable text files. This not only allows you to search the scanned document, but also to edit and share it.

# SECURE DATA AND AN OPTIMISED WORKFLOW

## PEACE OF MIND WITH SECURE DOCUMENT MANAGEMENT.

These TASKalfa devices have been designed to protect your data against theft. All the devices come with IPsec, IPv6 and PDF encryption as standard. Our optional Data Security Kit ensures that all the data stored on the hard disk during the processing of your document gets deleted and overwritten when the process is

completed. The optional card authentication function used in conjunction with print management software prevents unauthorised accessing of data, as users need to identify themselves before being allowed to use the device and access documents.

## TAILOR THE DEVICE TO YOUR INDIVIDUAL NEEDS.

The HyPAST™ open software platform can be an integral part of your workflow. It is highly customisable to the way you do business, providing you with fast flexible access to your

documents whether you are interfacing with your Document Management Systems or Systems Enterprise Resource Planning (ERP)



### ECONOMY

- > Our long-life printer drum with an amorphous-silicon surface lasts for at least 600,000 prints.
- > High reliability = less downtime = more savings.



### ENVIRONMENT -

Due to Smart power technology

- > Uses as little energy as possible.
- > Uses energy only when it is needed.
- > Long-life components save resources.



### USABILITY

- > Customisable home screen with simple and intuitive menu structure.
- > Improved driver with enhanced functionality and usability.
- > Up to 4 USB hosts for devices such as IC Card readers, USB keyboards and USB devices to scan-to or print-from.

# PAPER HANDLING TO MATCH YOUR EXACT NEEDS

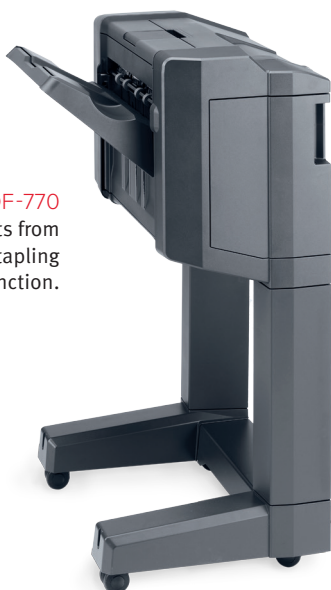
HIGH CAPACITY AND A WIDE RANGE OF FORMATS AND FINISHINGS.

Our TASKalfa devices can be complemented with a wide range of paper-handling options that will meet all your present and future needs. You may for instance add additional paper trays to increase the capacity of your device up to 7,150 sheets for hours of non-stop printing in six different media types.

**7 BINS MAILBOX  
SORTER MT-730**  
Ideal for large departments,  
separates user  
output into 7 trays.



**1000-SHEET FINISHER DF-770**  
Supports various formats from  
B5E to A3. With optional stapling  
and hole punching function.



**4000-SHEET  
FINISHER DF-790**  
Particularly suited for large  
outputs. With optional stapling  
and hole punching function.



**BF-730  
OPTIONAL FOR DF-790**  
Booklet and tri-folding unit.

**TASKalfa**   
3501i

**TASKalfa**   
4501i

**TASKalfa**   
5501i

> PPM BLACK & WHITE A4

35 pages per minute

45 pages per minute

55 pages per minute

> SCANNER SPEED

160 scans per minute

160 scans per minute

160 scans per minute

> MAX. PAPER CAPACITY

7,150 sheets

7,150 sheets

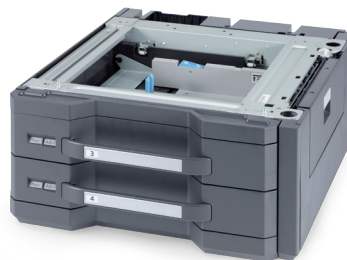
7,150 sheets



**DUPLEX DOCUMENT  
PROCESSOR DP-772**  
Scans double-sided documents  
in one path.



**3000-SHEET PAPER  
FEEDER PF-770**  
Ideal for large A4 print runs.



**1000-SHEET PAPER FEEDER PF-730**  
Ideal for paper sizes between A5 and  
"12x18" (305x457)



**1 CARD AUTHENTICATION**  
The card authentication function not  
only protects sensitive data, it also  
allows personalised use of the  
device.

**2 DOCUMENT PROCESSOR DP-770**  
Single-pass document processor that  
scans one side of a page, then flips it  
and scans the other side.

**3 MULTI PURPOSE TRAY**  
For up to 150 sheets.

**4 3000-SHEET PAPER FEEDER PF-770**  
Allow your device to handle heavy  
workloads. The 3000-sheet paper  
feeder is ideal for different paper  
sizes e.g. A4, B5 and letter formats.



GENERAL

**Technology:** KYOCERA Laser Monochrome, HyPAS™ solution platform

**Engine speed (pages per minute):**

TASKalfa 3501i: Up to 35/17 ppm A4/A3

TASKalfa 4501i: Up to 45/22 ppm A4/A3

TASKalfa 5501i: Up to 55/27 ppm A4/A3

**Resolution:** 600 x 600 dpi, Multi-bit technology for print quality of 9,600 dpi equivalent x 600 dpi

**Warm-up time from power on:**

Approx. 23 seconds or less

**Time to first page:**

TASKalfa 3501i: Approx. 4.7 seconds or less

TASKalfa 4501i: Approx. 3.8 seconds or less

TASKalfa 5501i: Approx. 3.2 seconds or less

CPU: Freescale QorIQ P1022 (Dual Core) 800MHz

Memory: 2 GB RAM + 160 GB HDD

**Standard interface:**

USB 2.0 (Hi-Speed), USB host 2.0, Fast Ethernet

10Base-T/100BaseTX/1000BaseT, slot for optional print server, slot for optional SD-card, slot for optional Fax System

**Dimensions (W x D x H):** Main unit: 668 x 767 x 747 mm

**Weight:** Main unit approx. 82 kg

**Power source:** AC 220 V ~ 240 V, 50/60 Hz

**Power consumption:**

TASKalfa 3501i - Printing: 660 W, Ready mode: 170 W,

Sleep mode: recovery priority 8.4 W, Energy saving priority 1.8 W

TASKalfa 4501i - Printing: 780 W, Ready mode: 170 W, Sleep

mode: Recovery priority 8.4 W, Energy saving priority 1.8 W

TASKalfa 5501i - Printing: 890 W, Ready mode: 170 W,

Sleep mode: Recovery priority 8.4 W, Energy saving priority 1.8 W

**Noise (sound pressure level ISO 7779/ISO 9296):**

TASKalfa 3501i - Printing: 48.8 dB(A) LpA, Ready mode: 33.2 dB(A) LpA

TASKalfa 4501i - Printing: 50.1 dB(A) LpA, Ready mode: 37.0 dB(A) LpA

TASKalfa 5501i - Printing: 51.4 dB(A) LpA, Ready mode: 33.6 dB(A) LpA

**Safety standards:** GS, TÜV, CE

This unit is manufactured according to ISO 9001 quality standard and ISO 14001 environmental standard.

RoHS compatibility

PAPER HANDLING

All paper capacities quoted are based on a max paper thickness of 0.11 mm. Please use paper recommended by KYOCERA under normal environmental conditions.

**Input capacity:**

150-sheet multi-purpose tray, 60–300 g/m²

A6R–305 x 457 mm, Tab paper (136–256 g/m²), banner

max. 305 x 1,220 mm; 2 x 500-sheet universal paper

cassette, 60–220 g/m², 140 x 182–305 x 457 mm

Max. input capacity with options: 7,150 sheets A4

**Duplex unit:** Duplex as standard supports

A5R–305 x 457 mm, 60–256 g/m²

**Output capacity:** 250 sheets face-down, max. output capacity 320 sheets

PRINT FUNCTIONS

**Controller language:** PRESCRIBE IIe, Emulations: PCL6 (PCL5cPCL-XL), KPDL3 (PostScript 3 compatible), PDF Direct Print, XPS Direct Print

**Operating systems:** All current Windows operating systems, Mac OS X version 10.4 or higher, UNIX LINUX, as well as other operating systems on request

**Fonts/barcodes:** 93 outline fonts (PCL), 136 fonts (KPDL3),

8 fonts (Windows Vista), 1 Bitmap font, 45 types of onedimensional barcodes plus two-dimensional barcode (PDF-417)

**Print features:** Encrypted PDF Direct Print, IPP printing, e-mail printing, WSD print, secure printing via SSL, IPsec, SNMv3, Quick copy, proof and hold, Private Print, job storage and job management functionality

COPY FUNCTIONS

**Max. original size:** A3

**Continuous copying:** 1–999

**Zoom range:** 25–400% in 1% steps

**Preset magnification ratios:** 5R/5E

**Digital features:** Scan-once-copy-many, electronic sort, 2in1 and 4in1 function, image repeat copy, page numbering, cover mode, booklet copy, interrupt copy, form overlay, stamp function and skip blank page function.

**Exposure mode:** Auto, manual: 7 or 13 steps

**Image adjustments:** Text + photo, text, photo, map

SCAN FUNCTIONS

**Functionality:** Scan-to-email, Scan-to-FTP, Scan-to-SMB,

Scan-to-USB Host, Scan-to-box, Network TWAIN, WSD scan

**Scan speed:** (A4, 300 dpi, Dual Scan with DP-772) b/w 160 images per minute, colour 80 images per minute

**Scan resolution:** 600 dpi, 400 dpi, 300 dpi, 200 dpi, 200 x 100 dpi, 200 x 400 dpi (256 greyscales)

**Max. scan size:** A3

**Original recognition:** Text, photo, text + photo, optimised for OCR

**Network protocol:** TCP/IP

**File types:** PDF (high-compression PDF), Searchable PDF (Option), TIFF, JPEG, XPS

FAX FUNCTIONS (optional)

**Compatibility:** ITU-T Super G3

**Modem speed:** Max. 33.6 kbps

**Transmission speed:** Max. 3 seconds (JBIG)

**Fax resolution:** Normal: 200 x 100 dpi, Fine: 200 x 200 dpi, Superfine: 200 x 400 dpi, Ultrafine: 400 x 400 dpi

**Maximum original size:** A3

**Compression method:** JBIG, MMR, MR, MH

**Memory:** Standard 12 MB, max. 128 MB

**Features:** Optional Internet-fax, network faxing, rotate transmission, rotate reception, duplex fax reception, memory reception, mailbox, remote diagnostics, dual fax with second fax system

CONSUMABLES

**TK-6305 Toner-Kit:** Average continuous toner yield 35,000 pages in accordance with 6% coverage A4

**WT-860 Waste Toner Bottle:** 100,000 pages (in accordance with 6% coverage)

**Staple cartridge:**

SH-10 for DF-770, BF-730, SH-12 for DF-790

OPTIONS

**Fax System (W) B**

**Internet Fax Kit (A)**

**Scan Extension Kit (A):** Scan to searchable PDF solution (embedded OCR) **Paper handling**

**DP-770(B) Document processor:** (reversing document processor), 100 sheets, 45–160 g/m², A5R–A3, folio

**DP-772 Document processor:** (one-path duplex scanning) 175 sheets; 35–220 g/m² (simplex), 50–220 g/m² (duplex); A5R–A3, folio

**PF-730(B) Paper feeder:** 2 x 500 sheets, 60–256 g/m², A5R–305 x 457 mm, folio

**PF-740(B) Paper feeder:** 3,000 sheets, 60–256 g/m², A4, B5, letter

**PF-770 A4 side deck:** 3,000 sheets, 60–300 g/m², A4, B5

**DT-730(B) Document tray**

**DF-790(C)\* Document finisher + AK-731: Main tray:**

max. 4,000 sheets A4 (3,000 sheets with attachment

BF-730); max. 60–300 g/m²; max. B5R–305 x 457 mm

Sub tray: 200 sheets A4; 60–300 g/m²; A6R–305 x 457 mm

Sub tray (top): 100 sheets; 60–300 g/m²; A6R–A4

Stapling up to 65 sheets A4 or 30 sheets A3 at 3 positions, B5–305 x 457 mm

**DF-770(D)\* Document finisher + AK-731:**

**Main tray:** 1,000 sheets A4, 60–300 g/m², B5E–305 x 457 mm,

3 positions stapling up to 50 sheets A4 or 30 sheets A3

**Sub tray:** 100 sheets A4, 60–300 g/m², A4–A6R

PH-7C/PH-7D Punch unit for DF-790(C)/DF-770(D):

2-hole/4-hole/Swedish type, 60–300 g/m², A5R–A3

**MT-730(B) Mailbox sorter for DF-790(C):**

7 bins x 100 sheets A4, 50 sheets A3/B4, 60–163 g/m²

**BF-730 Booklet and tri-folding unit for DF-790(C):**

Half folding: 60–256 g/m², A3, B4, A4R, Booklet: max. 16

sheets (64 pages, 60–90 g/m²), Non-staple folding: max. 5

sheets (60–90 g/m²), Tri-folding: 60–120 g/m², A4R

Multi tri-folding: 5 sheets (60–90 g/m²), 3 sheets (91–120 g/m²)

**JS-730 Job separator:** 30-sheet internal job separator, 60–256 g/m², A5R–A3

**JS-731 Job separator:** 70-sheet external job separator, 60–256 g/m², A5R–A3

\*Bridge unit AK-731 is required for the use of DF-790(C) and DF-770(B).

**Banner Guide (A):** Banner paper feeding guide, up to 10 sheets

**Fax memory**

**MM-16-128:** Optional fax memory (128 MB)

**Security**

**Data security kit (E):**

In line with ISO 15408 (Common Criteria) with security level EAL3

**Printed Document Guard Kit (B)**

**USB IC Card Reader and Card Reader Holder (E)**

**UG-33:** ThinPrint support

**UG-34:** Emulation (IBM Proprinter/EPSON LQ-850/ Diablo 630)

**Optional interface**

**IB-50:** Gigabit-Ethernet board 10BaseT/100BaseTX/1000BaseT

**IB-51:** Wireless Lan Interface

**Platen cover (E)**

**CB-730** Wooden cabinet

**CB-731** Metal cabinet



YOUR KYOCERA BUSINESS-PARTNER



KYOCERA Document Solutions (UK) Ltd  
Eldon Court, 75 - 77 London Road, Reading RG1 5BS  
Tel: 0118 931 1500 – Fax: 0118 931 1108  
www.kyoceradocumentsolutions.co.uk – info@duk.kyocera.com

\* KYOCERA Document Solutions does not warrant that any specifications mentioned will be error-free. Specifications are subject to change without notice. Information is correct at time of going to press. All other brand and product names may be registered trademarks or trademarks of their respective holders and are hereby acknowledged.