

Xerox® 4112™/4127™
Copier/Printer
Overview



Xerox 4112/4127
Copier/Printer
Your choice to do more
and finish first!



Introduction

Fast, Flexible and Easy. Our 4112™/4127™ Copier/Printer is here to help you grow your business. Use it to expand your offerings to your customers, build your customer base and boost your revenues. It puts a broad range of features and capabilities right at your fingertips. All offer you new opportunities to produce innovative, more complex, diverse and professional output quickly, flexibly and in higher volumes, including applications targeted at customers in specific industries.

Right at your point of need, our copier/printer offers you:

- High print speeds, up to 125 pages per minute (ppm)—one of the fastest in its class—as well as a highly productive 110 ppm.
- High-performance copying/scanning at up to 100 simplex/duplex images per minute (ipm).
- Your choice of three powerful servers designed to meet your individual needs, including our advanced, feature-rich Integrated Copy/Print Server.
- Exceptional productivity so you can do more within a shorter print window.
- Ease of use—everyone can be comfortable using this copier/printer.

- Outstanding image quality and output with excellent registration.
- A robust set of in-line finishing options to expand your applications capabilities.
- Multiple feeding and paper-handling options to boost both your productivity and your ability to produce attention-getting output.
- Proven reliability.
- Conveniently small footprint and high-value pricing.

Innovative production solutions to ensure a greener today and tomorrow.

For more information about our commitment to environmental sustainability, visit www.xerox.com/environment

Innovative EA Toner technology plays a key role in our copier/printer's high imaging quality:

- Emulsion Aggregation (EA) process results in chemically grown, small, consistent EA Toner particles.
- It enables finer lines for the highest levels of detailing, sharp text, halftones and deep solid blacks.
- EA Toner renders even the most difficult line work razor sharp.
- Higher toner yields let you undertake longer print runs with less operator intervention.
- Longer photoconductor life and lower toner requirements per page contribute to environmental friendliness.



Speed and Productivity, Image Quality and Ease of Use



Meet your tightest deadlines. Take on more jobs and get them out the door faster. Create high-quality output easily. Make the most of your investment. The 4112™/4127™ Copier/Printer's exceptional speed and productivity, image quality and ease of use put these goals and more well within your reach.

Speed and Productivity

Our copier/printer runs fast so you don't have to

These speed and productivity advantages make the most of every minute to ensure you achieve an excellent return on your investment:

- High-speed print engines deliver output up to 125 and 110 pages per minute.
- Single-pass, dual head scanner scans up to 100 images per minute for both single- and double-sided originals—you'll spend less time waiting at the copier.
- Concurrent scan/receive, RIP and print processing provide maximum throughput.
- A 250-sheet document handler ensures that large or complex jobs go faster and easier.

- Complete complex jobs, no manual collation required, with the easy Job Build feature.
- Convert hard copy pages to electronic files in TIFF, JPEG and PDF formats that you can store in folders for fast reprint or send directly to an FTP location or an email distribution list.
- Optional full-color scan capabilities mean you can communicate in full color via email or digital file distribution (JPEG, TIFF, PDF) for fast, inexpensive communication.

Image Quality

It makes you look good

We know you expect excellent image quality for all of your output, whether it is for internal use in your business or for your customers' eyes. Our copier/printer delivers consistent, high-quality reproduction of text, solids and images and exceptional registration for polished, professional output with:

- 2400 x 2400 dpi print resolution
- 600 x 600 dpi with 8-bit gray (256 shades) scan resolution

Ease of Use

So simple to operate

Everyone from walk-up and casual users to experienced operators will feel comfortable using our copier/printer:

- Straightforward graphic user interface (GUI) is rich in easily accessible features.
 - Full color touch screen lets you quickly make your selections with intuitively placed buttons.
 - Most commonly used functions appear on the main screen.
 - Look and feel matches your other Xerox copiers and printers, reducing learning curve.
 - Supports multiple languages.
 - Simple programming of sophisticated jobs.
- Load-while-run, unload-while-run and change-while-run capabilities mean you can load paper, unload finished documents, or change toner cartridges while the copier/printer is running. This ensures more continuous operation and higher productivity.
- With multiple scan-to-destination options, you can scan and save or scan and send documents in one easy step, because the system uses Job Flow sheets to automatically email or distribute jobs to designated locations.
- Engineering Replaceable Units (ERUs) make it easy for service technicians to replace key components, like photo-receptors, for efficient maintenance and more uptime.
- Accepts any data stream, anytime, including Adobe® PostScript®, PDF, PCL, LCDS, IPDS, VIPP® and PPML.
- Small footprint means you can place the copier/printer conveniently close to users.

Feeding and Finishing

Like You, It Does It All

You can create applications that speak to many industries with our copier/printer. It offers powerful media and feeding and finishing capabilities to ensure you can produce dynamic applications—at your point of need—that answer your internal requirements, appeal to your customers, and drive new business and revenues your way.

You can choose from a broad range of stocks in an array of weights and sizes, including approved coated stocks.

Feeding and paper handling

highlights include:

- Increased productivity with uninterrupted long runs by adding an optional high-capacity feeder or a choice of two oversized high-capacity feeders to accommodate standard, oversize and custom stock.
- Attract attention and maximize the impact of your high-value documents by adding full-color covers or inserts (up to 200 sheets) via the standard post-process inserter.
- Run multiple sizes and weights (up to 250 sheets) with the bypass tray.

Robust in-line finishing options expand your on-the-spot applications capabilities, for example:

- Collating helps you quickly organize your jobs.
- Variable length stapling (up to 100 sheets)—24 staple choices yield top-quality stapled sets.
- Hole punching—2 and 3—saves time and costs.
- GBC® AdvancedPunch™ offers a versatile range of punching styles so you can create documents in-house that are ready for professional binding. Easily blends printing, collating and punching to save time, maximize productivity and lower costs.

- Bi-folding, C-folding, Z-folding and Engineering Z-folding (tabloid folded to fit into letter sized document sets) saves time and enhances your productivity.
- Booklet finishing options are ideal for large booklets and calendars—up to 25 sheets (100 imposed pages):
 - Booklet Maker Finisher provides excellent handling of approved coated stocks. Offers saddle-stitch and bi-fold capabilities.
 - SquareFold® Trimmer Module creases cover sheets and performs face trimming to ensure a professional finish. Control trim and degree of square fold, creating square

spine booklets that can be opened flat and are easy to handle, stack and store.

- Interface Module acts as a “communications hub” whenever you elect to have more than one finisher connected to your copier/printer. It enables key functions such as media cooling, decurling and finisher module communications.
- High-Capacity Stacker neatly stacks up to 5,000 letter-size sheets. A removable cart included for easy transport and unloading. Handles even your largest jobs.



Reliability

Xerox Service: All the support you'll need

You can rely on our world-class service to support you in many ways:

- For 24/7 support, turn to our Welcome Center (1-800-ASK-XEROX) and Online Support Assistant (www.xerox.com).
- We've made it easy for you to perform routine maintenance and tune-ups yourself and maximize your uptime via the **Xerox Productivity Plus Integrated Maintenance Program**.
- Automatic Meter Reads (AMR) ensure accurate billing (where available).

Xerox Paper and Specialty Media

See the difference quality makes™

Our digitally optimized papers and specialty media products are specifically engineered in concert with the Xerox 4112™/4127™ Copier/Printer to provide you with superior productivity, reliability and flexibility. Choose from a broad selection of paper and specialty media, in a full range of weights and sizes, to create a variety of print applications and finished documents. For more information, visit us at www.xerox.com, call 1-800-822-2200 in the U.S. or 1-800-668-0199 in Canada or contact your Authorized Xerox Reseller.

Configurations



- 1** Oversized High-Capacity feeder
- 2** 250 sheet bypass tray
- 3** 100 ipm dual-bar scanner
- 4** Print resolution up to 2400 x 2400 dpi
- 5** 1,100 sheet letter size tray
- 6** 1,600 sheet letter size tray
- 7** 2-550 sheet trays standard and custom sizes to 13" x 19.2"
- 8** Interface module
- 9** GBC AdvancedPunch
- 10** High-Capacity Stacker
- 11** Optional folder C-fold, Z-fold, Engineering Z-fold
- 12** 200 sheet standard post process inserter
- 13** Booklet Maker Finisher
Hole punch
500 sheet top tray
- 14** Xerox SquareFold Trimmer Module

Multiple Configuration Options Allow for Greater Functionality and Flexibility

Feeding Options



Oversized High-Capacity Feeder
(2,000 sheets up to 13" x 19.2")



2-tray High-Capacity Feeder
(2,000 sheets letter size each
or 4,000 sheets total)



2-tray Oversized
High-Capacity Feeder
(4,000 sheets up to 13" x 19.2")

Finishing Options Tailored to Your Business Needs



Interface Module
and GBC
AdvancedPunch



Interface Module
and High-Capacity
Stacker



Standard finisher with
optional C-Z folder
(2-100 sheet, 3-position
variable length stapler)



Booklet Maker Finisher
with optional C-Z Folder
(25 sheets or 100 page
booklets)



Xerox SquareFold
Trimmer Module
Attaches to the optional
Booklet Maker Finisher

Choice of Print Servers

Standard Integrated Copy/Print Server

You'll get a simple workflow with an easy-to-use touch screen, FreeFlow® integration, excellent features and a small footprint:

- **Copy and Save/Print and Delete Modes.** Select "copy and save" on the touch screen and, as you copy, document images and settings are saved to a mailbox/folder on the internal server. One-step "print and delete" option for mailbox printing.
- **Thumbnail Preview.** See a thumbnail view of your copy/scan job right at the touch screen. Allows you to merge jobs and delete unwanted pages.
- **Bates Stamping.** Built-in Bates Stamping feature generates copies with customized alpha-numeric descriptors on each page.
- **Extensible Interface Platform® (EIP).** This software platform enables you to shape our copier/printer to fit the way you work. Using standard web-based tools, your developers can quickly build and access applications that can be customized for the user interface like the Xerox Secure Access Unified ID System™.
- **Exception Page Programming.** Easy programming of your jobs right at your PC or Mac® print driver, for example, color covers and inserts, tabs and Z-folds.
- **Multiple Sets of Copies with Separators.** Make multiple collated or uncollated sets separated by slip sheets for efficient distribution.
- **Security.** A large set of security features is packed into one compact device, including data encryption/overwrite capabilities and removable hard drives.

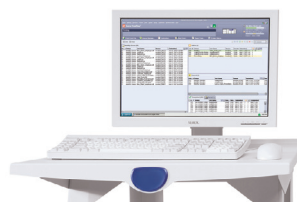


Integrated Copy/Print Server

Optional Xerox FreeFlow Print Server

You'll get unmatched power and synergy across our entire monochrome, color and highlight color portfolio on top of a superior feature set:

- **Process Speed and Capacity.** Simultaneously receive, RIP and print several jobs at once or one long streaming job.
- **Submit Jobs from Anywhere.** For example, submit from desktop applications, host-based TCP/IP connections, the web, CD-ROMs, portable USB devices and optional FreeFlow Suite components.
- **Scalability.** You begin with production power and a familiar workflow at a great price; add only those feature licenses that you need to meet your application requirements.
- **Automated Job Ticketing and Customized Job Workflows.** Queues and hot folders let you streamline your workflow with minimal operator intervention.
- **Print What You Want, When You Want and Where You Want.** Native acceptance of most transactional data streams, including IPDS, LCDS and VIPP.
- **Excellent Halftone Rendering of Photos.** Enhanced ability to reproduce photos in halftones enables you to create high-end marketing materials with superior black and white imagery.
- **Quickly Add Exception Pages.** Save time and increase productivity by specifying multiple page ranges for a particular exception—no need for separate exceptions for each page range.
- **Strong Security.** Provided via UNIX-based platform and flexible control to define settings for users and groups.



Xerox FreeFlow Print Server

Optional Xerox EX Print Server, powered by Fiery®

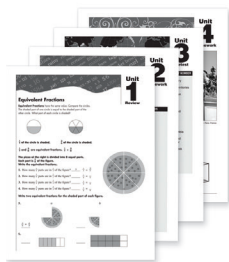
You'll get unprecedented productivity with the Fiery workflow when demanding turnaround times, flexible make-ready and high-quality output are needed:

- **Speed and Productivity.** Advanced hardware and core technology optimize throughput to keep our copier/printer running at rated speeds.
- **Familiar Fiery Features.** Easy access to all of our copier/printer's capabilities in a familiar interface.
- **Manage One or All of Your Fiery-Driven Printers Across Your Enterprise.** Color and monochrome, via the popular EFI Command WorkStation™.
- **Enhanced Productivity.** Advanced Queue Management capabilities reduce bottlenecks and minimize downtime.
- **FreeFlow Enablement, Automatic Job Submission.** Reduce transaction costs and job setup time for PC and Mac® users.
- **Variable Information capability** with open, scalable workflow tools, from entry-level to advanced, supporting FreeForm™, VIPP and PPML.
- **Optional EFI Impose, Fiery Edition.** Advanced imposition features in a visual interface.
- **Optional EFI Compose Package.** Visually-based job preparation, layout and composition tasks.
- **Sample Print.** Flexible operator commands to perform quality control of the output while engine is printing to minimize errors and waste.



Xerox EX Print Server, powered by Fiery

Applications and Environments



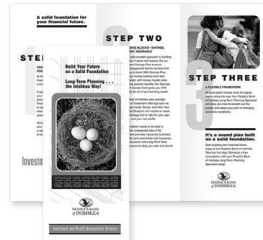
Collate



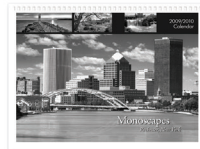
Tabs



Squarefold
Trim Booklet



Bi-Fold, C-Fold, Z-Fold



Die Set Punch



Color Inserts, Staple and
Engineering Z-Fold

Our copier/printer lets you do more. Develop innovative, business-generating applications now and in the future.

Quick, Franchise or Enterprise/In-plant Printers

Applications include complex jobs, manuals, collaterals, calendars, catalogs, newsletters and forms.

- Produce the high-quality output your customers demand.
- Meet aggressive turnaround times.
- Offer more applications and services (optional Full Color Scan Enablement Kit), including professionally bound, lay-flat documents and neat square fold booklets.
- Offer personalization using optional one-to-one software.
- Supports coated/extra-heavyweight media.

Legal, Insurance and Healthcare

Applications include evidentiary, discovery and case management documents, schedules and newsletters.

- Built-in Bates Stamping lets you generate copies with customized 16-digit alpha-numeric descriptors on each page.
- Reduce-to-Fit feature enables edge-to-edge copying.

- Achieve consistently high productivity with high speed.
- Increase productivity when you work with Document Processing, Archiving and Stamping software, like RSA, iPro, Law and Ribstone.
- Flexible in-line punch styles make it easy to create professionally bound documents in-house.
- Communicate faster and more effectively via scan to email.
- Create both office publications and transactional print documents.

Education

Applications include teacher curriculum materials, workbooks, student directories, coursepacks and yearbooks.

- Teachers and others can create multiple collated or uncollated sets with slip sheets for classroom handouts; sets can be finished with hole-punch or staple.
- Lay-flat binding provides 360-degree rotation.
- Fast copy speed and broad media capacity gives teachers and assistants more time in the classroom.
- Create envelope-ready correspondence using the folder.
- Achieve better, more effective communications with full-color scanning and scan-to-email capabilities.

Service Bureau or Data Center

Applications include statements, bills and schedules.

- The optional FreeFlow® Print Server delivers native transaction (IPDS/LCDS) publishing and personalized data stream printing support.
- High reliability ensures you meet tight deadlines.
- Create high-value, high-impact applications on the spot using color insertion, personalization and in-line finishing.

Office Workgroup

Applications include newsletters, handouts, presentations, reports and correspondence.

- Ease-of-use ensures copying, scanning and printing are no-stress activities.
- Expansive media capacity, more pick points, and in-line hole-punch, stapling, folding and booklet-making options reduce labor and ensure consistent results.
- GBC AdvancedPunch enables you to make on-the-fly changes to presentations and reports and quickly produce ready-to-bind documents.
- Security features protect your data; copy, scan and print data can be encrypted or overwritten to meet your corporate security standards.

Specifications for the Xerox 4112™/4127™ Copier/Printer

Print Engines

- Xerographic Engine
- Print Speeds
 - 110/125 ppm (8.5" x 11"/A4)
 - 69/78 ppm (8.5" x 14"/B4)
 - 55/62 ppm (11" x 17"/A3)
 - 34/34 ppm (12" x 18"/SRA3)
- First Copy Out Time: 3.5 seconds
- Simplex or duplex printing
- Up to 1200 x 1200 dpi RIP resolution and up to 2400 x 2400 dpi resolution with halftone screen 106 lpi (default) or 150 lpi (high quality mode)
- Front to back registration +/- 0.7 mm
- Automatic Meter Read (AMR) capable (where available)

Document Storage

- 40 GB Hard Drive with 14.6 GB for document storage

Scanner/Document Handler

- Dual Head Scanner
 - 100 ipm black and white scanning, simplex/duplex
 - Optional Color Scan Enablement Kit
- Optical 600 x 600 dpi 8-bit Gray (256 shades) scan resolution
- Scans in industry standard PDF, JPEG, TIFF or multi-page TIFF; supports LDP
- Scan to Email with Mail Delivery Notification
- Scan to Network File Server
- 250 sheet Duplex Automatic Document Feeder
- Throughput sizes: 5" x 8" to 11" x 17"/A5 to A3
- Throughput weights:
 - Simplex or duplex: 16 lb Bond to 110 lb Index (52 gsm to 200 gsm)
- Optional PDF Scan Kit

Paper Handling

Stock weights and capacity:

- **Tray 1*:** 1,100 sheets (8.5" x 11"/A4)
- **Tray 2*:** 1,600 sheets (8.5" x 11"/A4)
- **Tray 3-4*:** 550 sheets each 5.5" x 7.2" (140 mm x 182 mm) to 13.0" x 19.2" (330 mm x 488 mm/A5 to SRA3);
*Capacity based on 16 lb Bond to 80 lb Cover (52 gsm to 216 gsm)
- **Tray 5 Bypass Tray:**
250 sheets (4" x 6"/102 mm x 152 mm to 13" x 19.2"/330 mm x 488 mm);
16 lb Bond to 140 lb Index (52 gsm to 253 gsm)
- **Standard Post Process Inserter:**
Inserts pre-printed offset or digital color documents in a post fuser manner; 200 sheets (8.5" x 11" to 11" x 17"/A4 to A3); 16 lb Bond to 90 lb Cover (52 gsm to 220 gsm)
- **Optional High-Capacity Feeder:**
2 trays, 2,000 sheets each (8.5" x 11"/A4);
16 lb Bond to 80 lb Cover (52 gsm to 216 gsm)
- **Optional Oversized High-Capacity Feeders:**
1- or 2-Tray Feeders; 2,000 sheets in each tray (8" x 10"/B5 to 13" x 19.2"/SRA3); 18 lb to 110 lb (64 to 253 gsm)
- **Coated Stocks:**
Refer to Customer Expectation Setting Document for approved Xerox coated stocks

Standard Finisher

- Multi position single or dual 100 sheet variable length stapling
- 2 and 3 hole punch North America; 2 and 4 hole punch Europe and South America; 4 hole Swedish punch
- Stacker capacity of 3,000 sheets (20 lb/80 gsm); top tray 500 sheets (20 lb/80 gsm)

Optional Booklet Maker Finisher

Includes features of the Standard Finisher plus:

- Automatically creates booklets of up to 25 sheets (100 imaged sides with saddle stitching) from 12" x 18" SRA3, 11" x 17"/A3, 8.5" x 14" or 8.5" x 11"/A4

Optional High-Capacity Stacker with rollaway cart

- 5,000-sheet offsetting output stack tray; 7.2" x 8.3" up to 13" x 19.2" (B5 LEF to SRA3)
- 500-sheet top tray and includes one rollaway cart; additional carts available

Optional Folder

- C-fold and Z-fold of 8.5" x 11"/A4
- Print on inside or outside of folded paper
- Folds 11" x 17"/A3 Z-fold for insertion into letter/A4 document sets (Engineering Z-fold)

Xerox SquareFold® Trimmer Module

- Attaches to the optional Booklet Maker Finisher
- 16 lb Bond to 90 lb Cover (60 gsm to 220 gsm)
- Accepts paper sizes: 8.5" x 11" SF (216 mm x 279 mm) minimum;
13" x 18" (330 mm x 457 mm) maximum

GC® AdvancedPunch™

- Paper supported: 8.5" x 11 (A4) Long Edge Feed (11" side only)
- 20 lb Bond to 80 lb Cover (75 gsm to 216 gsm)
- Several customer replaceable Die Sets available

Data Security

- Secure Print
- Image Overwrite up to 3 times
- Data Encryption (SSL/TLS)

Electrical Requirements**

- Print Engine:
 - 208–240 VAC, 60/50 Hz, 15/13 amp service
 - KVA Rating: Max Power Consumption: 2.8–3.1 KVA
 - Agency certification: Energy Star®, CSA, Europe: CE, NEMKO, WEEE compliance
- Optional Feeding/Finishing:
 - Each module requires 100 – 240 VAC, 60/50 Hz power

** Refer to the Install Planning Document for installation details

Print Servers

Integrated Copy/Print Server

Hardware Specifications

- 40 GB Hard Disk Drive, 1 GB RAM
- 10.4" color, touch screen flat-panel display
- Ethernet interface (10 MBTX/sec and 100 MBTX/sec)

Client Environments Supported

- Windows® 2000/XP and Vista
- Macintosh® OS 10.3, 10.4.8
- IntelMac 10.4.4 – 10.4.8, 10.5

PDLs and Data Formats

- Adobe® PostScript® Level 3
- PDF
- PCL 5e and 6
- TIFF
- HPGL, HPGL2

Connectivity

Native network environments

- TCP/IP, SNMP, SMB, Novell® IPX, AppleTalk®, IPP
- Copy and Save to mailbox/folders
- Preview documents from mailbox before printing
- Mailbox backup and restore
- IPv6 compliant

Optional Xerox FreeFlow® Print Server

Hardware Specifications

- SUN® platform
- 2 GB memory
- 160 GB, SATA Hard Drive (minimum)
- DVD Writer/CD Writer
- Color flat-panel monitor, keyboard and mouse

Client Environments Supported

- Windows® 2000 SP4/XP SP2, Server 2003, Vista and Server 2008: 32-bit and 64-bit
- Macintosh® OS X 10.3.9 or later

Options

- FreeFlow Print Server Stand
- FreeFlow VI Interpreter (VIPP®)
- Imposition License (standard)
- Productivity Pack—delivers multiple queues, stock library and more
- LCDS and IPDS enablement
- Online CUP Kit (Channel-to-Universal PCI for online channel connectivity)
- Removable Hard Disk Drive
- Disk Overwrite

Connectivity

Native network environments

- TCP/IP, SNMP, Novell® IPX, AppleTalk®, IPP
- IPv6 compliant

Optional Xerox EX Print Server, powered by Fiery®

Hardware Specifications

- 2.8 GHz Celeron® D CPU
- 1 GB Memory
- Two 80 GB SATA Hard Drives
- DVD/CD-RW drive

Client Environments Supported

- Windows® 2000 SP4/XP SP2, Server 2003, Vista: 32-bit and 64-bit
- Macintosh® OS X 10.3 or later
- Sun™/Linux/SGI UNIX Printing via LPD

Fiery Optional Hardware/Software

- Fiery Compose, Fiery Impose Package
- FACI Kit (flat-panel monitor, keyboard, mouse)
- FACI Furniture
- External Hard Disk Drive Security Kit
- FreeFlow VI Interpreter (formerly VIPP)

Connectivity

Native network environments

- TCP/IP, AppleTalk®, SNMP, SMB, IPP, NDPS, NetWare, Novell® Certified, Bonjour Support
- Energy Star® certified
- IPv6 compliant

For more information, visit us at www.xerox.com, call 1-800-822-2200 in the U.S. or 1-800-668-0199 in Canada or contact your Authorized Xerox Reseller.

