



Xerox® Colour 550/560 Printer

Productivity plus outstanding colour
for all environments.



Alansar
Digital Copiers

Hotline

01111114194

فرع فيصل: 3 ش فهمي حجازي - من حسن عبد العال - متفرع من ش فيصل - أمام إدارة الهرم التعليمية
ت: 01112000561-01112000645-33935880-33935881

فرع مدينة نصر: 17 ش عبد الحكيم الرفاعي - من ش عباس العقاد - أمام الحديقة الدولية
ت: 01112000539-01112000568-26721840-26721839

فرع اسكندرية: وابور المياة 25 ش أحمد ذكي أبو شادي - متفرع من ش المنارة - أمام نادي مياة أسكندرية
ت: 01211644002-01211644470-01211634446-01211644005-4252158

Productivity, scalability and professional image quality, all-in-one.

The Xerox® Colour 550/560 Printer integrates benchmark image quality, expansive media handling and professional finishing with efficient, secure and flexible colour workflows to deliver an affordable print solution for any environment.



Gain new business and keep high-value colour printing in-house.

- Benchmark 2400 x 2400 dpi image quality with excellent colour consistency.
- Emulsion Aggregation (EA) Low Melt Toner gives all your applications a smooth, offset-like finish with outstanding sharpness and uniformity, crisp text and bright highlights.
- Enhanced Gloss Mode setting produces output with a glossy lustre.
- Digital speed, easy set-up and automated workflows accomplish the quick turnarounds and cost-effective short runs customers expect.
- Meets Fogra certification standards.

Flexibility to create a wider range of applications.

- Expansive media range lets you print everything from postcards to posters.
- Handles both coated and uncoated stock, up to 300 gsm.
- Inline finishing options offer a professional polish with stapling, hole-punching and folding for presentations, brochures, reports and newsletters.
- Standard Xerox® Integrated Colour Server and four other server options.
- Choice of additional print servers allows you to boost colour management and streamline labour-intensive processes.
- Variable data capabilities let you capitalise on personalised applications for direct mail.

Get productivity from start to finish.

- Four standard internal paper trays plus additional feeding options optimise the number of sheets in your print run.
- Swift printing of 50/55 ppm and 60/65 ppm, colour/black and white.
- Load-while-run paper and toner.
- Auto-duplexing up to 220 gsm cover coated and uncoated eliminates time-consuming manual intervention.
- An array of Customer Replaceable Units puts you in control of basic maintenance.
- Smart eSolutions® and MeterAssistant® collect and analyse information that is sent to Xerox support for easy, accurate billing.

Streamline processes, save time and simplify device management.

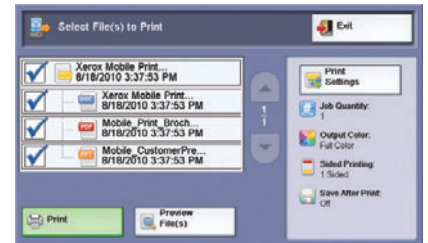
- Scan, print, copy, fax and route files, all at once. Concurrent operation maximises productivity, letting multiple users perform different tasks simultaneously.
- Never wait for a critical print job. The Print Around feature holds a job in need of resources (such as special paper size) and prints the next job in the queue.
- Bidirectional print drivers and communications. Make many walk-up capabilities available at the desktop and enables users to see the print queue and supplies status from their PC.
- Superior scanning. Create text-searchable files at the device for easy retrieval – compression technology reduces network load for fast transmission.
- Automate common workflows. Create job flow sheets to automatically route documents to predefined locations, including email, fax destinations and FTP/SMB sites.
- Remotely manage your device. CentreWare® IS Embedded Web Server automates installation, troubleshooting feature set-up and upgrading.

Manage costs and save money.

- Customise print driver settings for economy and efficiency. Set two-sided printing, choose N-up for printing multiple pages on a single sheet as your default, or adjust settings for specific applications.
- Manage and track device usage with the internal Auditoron, that sets limits on a device's features for analysis and billing purposes. Xerox® Standard Accounting provides reports for greater cost control.

Implement enterprise security solutions without skilled IT know-how to safeguard your critical information.

- Secure Print keeps documents private by holding print jobs in the queue until the user enters the password.
- Password protected PDFs require a password to open and view a sensitive scan.
- Data Security keeps information safe by encrypting resident data on the device and electronically erases images on the hard device.
- Full system Common Criteria (ISO15408) Certification at EAL3 ensures the Xerox® Colour 550/560 Printer conforms to the most stringent security standards and regulations.



Xerox® Mobile Print Solution

Xerox makes mobile printing simpler and more convenient, while keeping your business secure. We empower today's mobile professionals with the freedom to send print jobs from any email-enabled device.

Simple. Xerox® Mobile Print Solution works with any email-enabled mobile device. There's no software to load, no searching for online printer information, no time wasted looking for the right application. Plus, there's no dependence on administrative support staff for printing tasks.

Convenient. Wherever they're working, users will be able to print MS Office documents, including MS Word, Excel® and PowerPoint®, as well as PDFs.

Secure. Print directly from mobile devices and retrieve documents at a Xerox®-enabled multifunction system with a secure confirmation code.

The Xerox® Colour 550/560 is easy on the environment.

- "Earth Smart" options at your print driver enables you to save paper and resources by setting your default to print two-up in draft mode.
- EA Low Melt Toner delivers high print quality at a lower melting point, saving energy.
- Scan Preview lets you see how your results will look before printing or sending, saving paper and energy.
- Paperless faxing with LAN fax sends faxes directly from applications on your desktop. Incoming faxes can be viewed as thumbnail images on the user interface, so you print only what's important.

Productivity – simpler, smarter.

Simplicity leads to productivity. The Xerox® Colour 550/560 Printer simplifies the process of capturing, editing, managing and storing documents. Xerox® workflow solutions are the simplest way to connect people to the information and tools they need to get quality work done faster, more efficiently and effectively.

Productive, versatile workflow solutions with easy-to-use interface.

- Turn paper into digital information and deliver it to your desktop in your preferred format
- Keep intellectual property organised and secure with automated routing and delivery
- Manage device access and control costs
- Track and account for activity



Optional solutions include:

Xerox® Scan to PC Desktop®

Scan to PC Desktop bridges the gap between Microsoft Office documents, PDFs and paper. It allows you to customise the scanning menus on your Xerox® device directly from your desktop for personalised document capture and desktop document management.

Xerox Secure Access Unified ID System®

Utilise existing employee ID badges to unlock system features via badge proximity or swiping. Data can then be made available for tracking, accounting and regulatory purposes. Follow-You™ print allows you to send a document to a secure print queue and use your ID card to access it from any network printer equipped with Secure Access.

Equitrac Office®

Equitrac Office provides a secure, convenient, mobile print workflow while controlling costs and simplifying administration. It enables single sign-on access to devices and services, personal print queues to maximise document security and mobility, and rules to create cost-effective printer usage.

Build your solution today and expand it tomorrow as your business grows.

Feeding Options: Add on as your productivity and media handling needs increase.

High Capacity Feeder – 2,000 sheets A4 up to 220 gsm coated

- Great for long run reports, presentations, mailers, etc.

One- or Two-Tray Oversized High Capacity Feeder (OHCF) – 2,000 - 4,000 sheets 330 x 488 mm each tray, up to 300 gsm coated. Paper stabiliser minimises skew; roller system prevents misfeeds.

- Reliable feeding for large quantities of coated paper and enables SRA3 full bleed applications
- Envelope and small media feeder

Finishing Options: Scale up your inline finishing capabilities as your demands grow.

Simple Catch Tray

Offset Catch Tray

Advanced Finisher – Multiposition 50-sheet stapling and standard 2/4 hole punching for coated/uncoated paper.

Professional Finisher – Multiposition 50-sheet stapling and standard 2/4 hole punching plus bi-folding and saddle-stitch booklet making.

Light-Production Finishers – These versatile finishing options enable coated booklets, brochures and bi-fold mailers as well as stacking, stapling and hole punching. They also include an interposer input tray. Choose from a Light Production Finisher, Light Production Finisher with Booklet Maker or a Light Production Finisher with Booklet Maker and Folder.

- The SquareFold® Trimmer Module enhances the power of your finisher with highly desired features, such as square folding and face trimming to produce high value brochures and booklets
- The new GBC AdvancedPunch™ lets you create professionally bound documents in-house by combining printing, collating and punching into one convenient step. You can select from various interchangeable die sets for popular binding styles without manual punching, thereby increasing productivity and lowering costs while producing professional looking documents

Productivity and security are built in to your Xerox® Colour 550/560 Printer.

User Interface features 10.4" colour touch screen.

Copy at 50 colour, 60 black and white copies per minute, even duplex.

Fax via G3 or IP Fax (SIP).

Scan at high speed, both colour and monochrome, with data converted to several formats – that can be password protected – and sent using a variety of methods, including saved to PC, server USB media or sent as an email attachment.

Be Secure with integrated security features such as IP filtering, image overwrite, secure print, encrypted scan-to-email, authentication and IPv6 support, etc.

Plus, choose additional options such as:

Xerox® Secure Access, Secure Watermark, Gigabit Ethernet



Server options to meet every need.

The Xerox® Colour 550/560 Printer offers a range of servers to fit your environment depending on your workflow, applications and preferences.

The Xerox® Integrated Colour Server comes **standard** with every Colour 550/560, bringing new levels of productivity to scan, copy, fax, print and office communications.

Accelerate your business with industry-leading print server options that bring unmatched flexibility and benchmark performance, colour management, imposition, variable printing and much more!



Xerox® Integrated Fierly® Colour Server

Get fast RIP speeds and great productivity while simplifying and streamlining your workflow by automating job submissions of repetitive job types with optional Hot Folders and Virtual Printers. Fierly ColorWise colour management tools produce precise, exact colour. And its basic variable data capabilities let you customise output with varying text, photos and graphics.

EX Print Server, Powered by Fierly®

You can produce effective marketing pieces with a wide range of output options, including automatic identification of job elements, eliminating the need to reprogramme jobs. Fierly ColorWise delivers high-quality colour fast and easy. Fierly Command Workstation reduces errors and waste. Supports Adobe PDF Print Engine, for a native, end-to-end PDF workflow.

CX Print Server, Powered by Creo® Color Server Technology

Advanced features and ease of use deliver excellent colour capability and quality expanding your range of services and business opportunities. Creo Color Server allows automated workflow for quick, error-free results.

Its superb colour output and management ensure customer-pleasing results. Built-in connectivity to Prinergy workflow and Adobe PDF Print Engine for a native, end-to-end PDF workflow.

Xerox® FreeFlow® Print Server

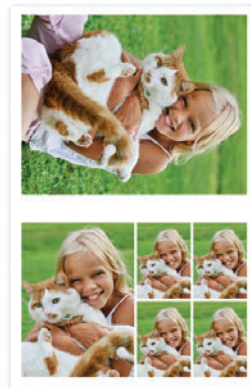
Delivering simple yet advanced colour management with Xerox® ConfidentColor technology, the FreeFlow Print Server enables you to deliver high-quality documents. It combines great features such as Xerox Consistent Colour Mode with advanced profiling technology, Adobe PDF Print Engine, as well as production features and the FreeFlow Print Server to give you everything you need for outstanding colour output.

Create exciting new applications – easily finished inline.

The printing world is exploding with new applications and new ways to use colour, media and finishing. The superb image quality, robust media latitude, flexible finishing options, modularity and server options of the Xerox® Colour 550/560 Printer, integrated with enterprise workflows, make it the perfect device for capturing new business, keeping more applications in-house.

Production printing with enterprise workflows at an affordable price.

Image quality, ease of use, productivity, media latitude, feeding and finishing options, plus world-class workflow solutions are at your fingertips. Grow your digital colour printing capabilities and reduce costs with the Xerox® Colour 550/560 Printer.



- **Brochures** – easily create professional, colourful brochures with productivity boosting inline folding and square fold trimming
- **Presentations/Newsletters** – inline stapling and hole punching makes producing presentations and newsletters quick and easy
- **Reports** – inserted tabs keep annual reports and financial reports organised, while stapling and simple 2/4 hole punch or GBC AdvancedPunch keep pages secure
- **Posters** – expanded media range lets you run eye-catching posters on sturdy coated media – up to SRA3
- **Booklets** – automated folding and coated paper saddle stitching – even inserts – give booklets such as retail catalogues and photo books a professional finish that's fast too
- **Custom media and photo applications** – impeccable colour and photo-finish image quality will keep customers coming to you for all today's latest photo applications

Specifications for the Xerox® Colour 550/560 Printer

Resolution

- Print/Copy: 2400 x 2400 dpi
Scan: 200 x 200, 300 x 300, 400 x 400, 600 x 600
- Line Screens: 600, 300, 200 and 150 Clustered Dot, 200 Rotated Line Screen¹
- Controller Print path: 600 x 600 x 8 dpi

Technology

- Load-while-run toner and paper capability
- Advanced Registration Technology for tighter control, ±1.2 mm along lead edge, front to back
- Custom paper set-up/alignment profiles
- Xerox® EA low melt toner
- Smart Kit® replaceable units for toners, drums, fuser, charge corotron, waste bottle, staples

Integrated Scanner

- 250 sheet capacity
- 50 ppm colour/65 ppm b/w in copy mode; 50 ppm colour/ 80 ppm b/w in network scanning mode
- Originals up to A3 in weights from 38 – 105 gsm
- Duplex Automatic Document Feeder (DADF)

Productivity/Print Speeds

- Duty Cycle²: 300,000
- Average Monthly Print Volume³: 10,000 to 50,000 pages per month

Xerox® Colour 550/560 Colour

- A4
 - 50/60 ppm (64 – 105 gsm) uncoated
 - 35/43 ppm (106 – 176 gsm) uncoated, (106 – 150 gsm) coated
 - 25/30 ppm (177 – 300 gsm) uncoated, (151 – 300 gsm) coated
- A3
 - 25/30 ppm (64 – 105 gsm) uncoated
 - 19/21ppm (106 – 176 gsm) uncoated, (106 – 150 gsm) coated
 - 14/14 ppm (177 – 300 gsm) uncoated, (151 – 300 gsm) coated
- SRA3
 - 22/27 ppm (64 – 105 gsm) uncoated
 - 15/19 ppm (106 – 176 gsm) uncoated, (106 – 150 gsm) coated;
 - 12/12ppm (177 – 300 gsm) uncoated, (151 – 300 gsm) coated

Xerox® Colour 550/560 Black and White

- A4
 - 55/65 ppm (64 – 176 gsm) uncoated;
 - 35/43 ppm (177 – 300 gsm) uncoated, (106 – 176 gsm) coated
 - 25/30 ppm (177 – 300 gsm) coated
- A3
 - 27/33 ppm (64 – 176 gsm) uncoated
 - 19/21 ppm (177 – 300 gsm) uncoated, (106 – 176 gsm) coated
 - 14/14 (177 – 300 gsm) coated
- SRA3
 - 25/29 ppm (64 – 176 gsm) uncoated
 - 15/19 ppm (177 – 300 gsm) uncoated, (106 – 176 gsm) coated
 - 12/12 (177 – 300 gsm) coated

Paper

Flexibility/Weights

- Internal Trays 64-220 gsm uncoated and coated
 - Tray 1 500-sheet SRA3, Tray 2 500-sheet A3, Tray 3 870-sheet A4, Tray 4 1140-sheet A4
- Bypass 250-sheet up to 300 gsm
 - minimum paper size 148 x 105 mm (SEF)
- Optional 2,000 sheet HCF & OHFC (1 or 2 tray)

Capacity and Handling (A4)

- 3,260 sheets std / 7,260 max
- Two-sided printing: Automatic up to 220 gsm. Manual up to 300 gsm from bypass tray

Feeding and Finishing Options

High-Capacity Feeder (HCF)

- A4, 2,000 sheets up to 220 gsm

1 or 2 tray oversized High-Capacity Feeder (OHFC)

- 64 – 300 gsm uncoated, 106 – 300 gsm coated
- 182 x 250 mm – B5 to SRA3/330 x 488 mm
- Auto duplex up to 220 gsm. Manual duplex up to 300 gsm
- One or two Tray Module: 2,000 sheets 4,000 sheets
- Envelope and small media feeder optional

Simple Catch Tray / Offset Catch Tray

- 500 sheet stacking

Advanced Finisher

- 500 sheet top tray, 3,000 sheet stacker tray
- Multi-position stapling, up to 50 sheets, Hole punching

Professional Finisher

- 500 sheet top tray, 1,500 sheet stacker tray
- Stapling, up to 50 sheets
- Hole punching
- Bi-fold, saddle stitch booklet maker up to 15 uncoated sheets, 7 sheets at 106 - 176 gsm coated, 5 sheets at 177 - 220 gsm coated

Light Production Finisher

- 500 sheet top tray, 3,000 sheet stacker tray
- Multi-position hole punching and stapling
- Stapling, up to 100 sheets
- 200 sheet interposer

Light Production Finisher with Booklet Maker – includes all features of the Light Production Finisher plus:

- Bi-fold or saddle-stitch booklet up to 25 sheets (100 imposed pages of 80 gsm media)

Light Production Finisher with Booklet Maker and Folder – includes all the features of Light Production Finisher & Booklet Maker plus:

- Optional Folding Module for A3/A4 tri/Z-fold

SquareFold® Trimmer Module

- Square fold up to 25 sheets
- Face trim between 2 – 20 mm in 0.1 mm increments
- Paper weights 64 gsm – 300 gsm coated and uncoated

GBC AdvancedPunch™

- Punch configurations available in A4
- Various interchangeable die sets included

www.xerox.com

Convenience Stapler

- Staple up to 50 sheets of 90 gsm media

Selected Colour/Graphic Arts Credentials

- Fogra Certification. PANTONE Matching System, PANTONE Goe and PANTONE Plus, APPE¹

Xerox® Integrated Colour Server (standard)

Hardware Specifications

- minimum 120 GB Hard Disk Drive, 2 GB RAM
- 10.4" colour, touch screen flat-panel display
- Ethernet interface (10 MBTX/sec, 100 MBTX/sec, 1000 MBTX/sec option)

Client Environments Supported

- Windows XP SP1 & above (32 & 64 bit), Server 2003/2008 (32 & 64 bit), Vista (32 & 64 bit), Windows 7 (32 & 64 bit), Mac OS 10.4 and above, Citrix, Custom driver for Unix: AIX 5 v5.3, HP UX 11.0/11i v2, Solaris 8/9/10, Linux Fedora Core 1/5, Red Hat ES4, SUSE 10/11
- Citrix, WHQL certification¹

PDLs and Data Formats

- PDF, XPS®, PCL® 6 emulation, HP-GL2 (direct submission), Adobe® PostScript® 3™ option, TIFF, JPEG

Scan

- Scan to Email, Scan to Folder, to PC, to Mailbox (private and public), options include Scan to USB, FTP, SMB, Desk, Text searchable PDF, PDF/A, XPS, Thumbnail Preview

Security

- Standard Secure Print, Authentication with LDAP/Kerberos/SMB/CAC, Password Protected PDF, FIPS 140-2 encryption, S/MIME Encrypted Email, IPsec, 802.1X, SNMP v3.0, Email over SSL, Image Overwrite (Immediate, Scheduled, On Demand) Hard Disk Data Encryption, Audit Log Optional CAC, Secure Access Unified ID System®, IPv6 Ready, 256 Bit Encryption, Common Criteria Certified

Other Options

- USB, Media Card Reader, Common Access Card Enablement Kit, Accounting Options, Extensible Interface Platform Enabled (EIP), Foreign Device Interface, Mobile/Smartphone Print

Choice of Print Servers

- Xerox® Integrated Fiery® Colour Server
- FreeFlow® Print Server
- CX Print Server, Powered by Creo®
- EX Print Server, Powered by Fiery®

Electrical Requirements

- Printer 220 – 240 VAC 50/60 Hz
- Options: 100 – 240 VAC 50/60 Hz
- Optional Feeding/Finishing:
 - Each module requires 100 – 240 VAC, 50/60 Hz power

Printer Dimensions

Height 1,391.5 mm, Width 1,574 mm, Depth 787 mm

¹ Depending on Print Server / Controller Selected

² Duty Cycle – Maximum volume capacity expected in any one month. Not expected to be sustained on a regular basis.

³ Average Monthly Print Volume – Expected regular monthly throughput.



Hotline
01111114194

فرع فيصل: 3ش فهمي حجازي - من حسن عبد العال - متفرع من ش فيصل - أمام إدارة الهرم التعليمية

ت: 01112000561-01112000645-33935880-33935881

فرع مدينة نصر: 17 ش عبد الحكيم الرفاعي - من ش عباس العقاد - أمام الحديقة الدولية

ت: 0112000539-01112000568-26721840-26721839

فرع اسكندرية: وابور الميأة 25 ش أحمد ذكي أبو شادي - متفرع من ش المنارة - أمام نادي ميأة اسكندرية

ت: 01211644002-01211644470-01211634446-01211644005-4252158