



Compact yet powerful colour solution



RICOH

Increase the efficiency of your operations with high-speed colour output and print from USB/SD and scan to email, folder or USB/SD. With outstanding energy saving qualities the MP C2051/2551 include fast automatic duplex printing, ultra low power consumption sleep mode and increased colour toner yield. With a compact footprint and advanced security features, these highly reliable multifunctional devices are essential partners in your office operations.



Brilliant colour

These MFDs have a resolution of 600 dpi, which produces high-quality colour prints.



Fast printing speeds

High speed printing for both black and white and colour of 20/25 20 pages per minute (ppm) (MP C2051) or 25 ppm (MP C2551).



Easy on the environment

With a number of eco-friendly and money saving features, these devices are kind to both the environment and your budget. Low power consumption reduces their carbon footprint.



Enhanced security

HDD encryption and HDD overwrite features ensure your data remains fully protected.



Optimise your productivity

First copy print speed for black and white is 6.3 seconds and colour is less than 9.2 seconds.

The MP C2051/2551 are powerful, user friendly colour multifunctional devices (MFDs).



Seamless integration

Today, multifunction devices have remarkable capabilities. Whether you're faxing, scanning, copying or printing, the output is high quality. They produce hardcopies at faster speeds and turn scans into dynamic files.

But at Ricoh we go further and our motto speaks for itself: "Believe in a better way"

Our products can be seamlessly integrated into your business and are developed to be intuitive to your specific needs. With our Business Solutions Group, we are always finding better ways for you to do business with the help of your Ricoh device. Not only will Ricoh's range of multifunction devices and software solutions improve your organisation's efficiency and productivity, it will also reduce your impact on the environment.



Superb colour

Your colour output will look crisp and accurate due to the MP C2051/2551's PxP™ toner. Quality remains consistent even during longer runs and print resolution up to a truly outstanding 1,200 dpi.

Wide media range

The MP C2051/2551 handle a truly wide variety of paper types. They accept sizes between A5 and A3, from a light weight 52 gsm to heavy 256 gsm.

The integrated office hub

- With SmartDeviceMonitor, you can upload your address book to the MP C2051/2551 to use for faxing documents, improving workflow, reducing print costs and keeping sensitive information secure.
- Authentication and encryption features protect your confidential data. The MP C2051/2551 are compatible with standard security packages like HDD Data Overwrite and Encryption, card authentication and secure print release.

Flexible scanning

- Send your scanned documents to email or a folder with a push of the button
- Scan to SD card and USB (optional)

Clever business faxing

- Forward incoming faxes to email and folder
- Mis-set paper alarm
- Double checks your fax destinations



Optional Envelope feeder



Environmentally friendly

At Ricoh we help you lower the environmental impact in your office as well as lowering your cost. The Aficio™ MP C2051/2551 have eco-friendly and money-saving features such as fast duplex printing and copying, ultra low power consumption sleep mode, increased toner yield and low Energy Star TEC (Typical Electricity Consumption) Value. In addition, Ricoh products are Energy Star compliant. This means less CO₂ is produced in providing the energy needed to run Ricoh devices.



Automatic Reverse Document Feeder
50-sheet

Bypass Tray
100-sheet

Paper Trays
2 x 250-sheet

2 Optional
100-sheet Paper Trays



Outstanding Usability

With full colour QWERTY graphic operating panel, you can preview your stored documents as a colour thumbnail. Quick sharing of information is now achievable.



Simplified view



Detailed view

Beyond scanning

Move beyond simple scanning with optional software that can

- Provide OCR (Optical Character Recognition) capabilities with **ESA TransFormer** – you can scan a hardcopy document into an editable format such as Microsoft Word, Excel, PowerPoint, PDF and more
- Automate your document scanning and routing. **GlobalScan NX** makes it easier to incorporate paper documents (such as invoices, purchase orders and bills) into your digital workflows

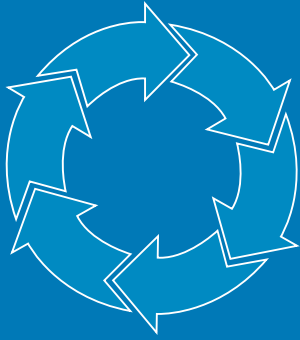


ESA TransFormer
Graphical icons for ease of use



GlobalScan NX
Project based scanning meets the needs of different business documents

Solutions

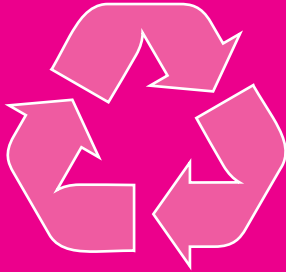


Business Solutions Group

When you buy a Ricoh device you gain access to our Business Solutions Group – a dedicated software support centre. Come to us with your challenge and we will identify the solution, source it internally, or develop one specifically to suit your business and integrate into your existing systems.

The Business Solutions Group works closely with customers and application developers to extend the efficiencies of Ricoh's software-enabled copiers and printers in order to meet specific business needs.

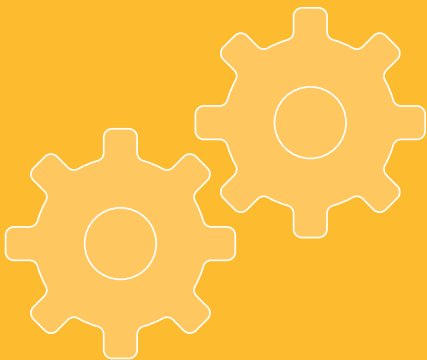
Environment



We've reduce our carbon footprint, have you?

At Ricoh we are using our expertise in innovation to deliver products that exceed in both performance and environmental sustainability. From green product design, manufacture of energy efficient office solutions, right down to the collection and recycling of our products; everything we do helps reduce usage of energy and resources, even as we push the limits of technology and productivity.

Service



Responsible Service

At Ricoh we are dedicated to offering our customers the highest level of service and maintenance; that is why our service response times average a mere four hours and you have access to over 500 manufacturer-trained technicians across the country.

To place a service call or to speak with one of our friendly customer service agents, simply phone our national contact centre on 1800 181 002 between 8am – 8pm EST.

Manage your printing

- Secure your information
- Cut costs and increase efficiency
- Centralise frequently used documents
- Improve your customer relationship management with personalised printing

Manage your documents

- Share information quickly and easily through your business
- Save time by scanning directly into applications used by your organisation
- Easily consolidate paper and electronic documents and processes

Manage your devices

- Meter reads and billing
- Usage reporting
- Matching device location to workload
- Efficiency optimisation and cost reduction

Machine Recycling Program

We have a free program designed for our customers to recycle their Ricoh machines once they have reached the end of their life. Since launching in 2002, we have successfully recycled over 180 tonnes of Ricoh machines into reusable materials.

Consumables Recycling Program

Ricoh's Consumables Recycling Program – the first in Australia – will ensure your toner cartridges are fully recycled with zero waste to landfill. Since the program's inception in 2001 we have diverted over 525 tonnes of material from landfill.

Ensuring efficient customer service

We use a multi-layered approach to customer service to underpin our promise of total reliability. Good customer service starts with our branch Customer Service Representatives and continues through an Online Service Centre, National Contact Centre and National Technical Support. If necessary, issues can be referred to the Regional Support Centre in Singapore or the Global Support Centre in Japan.

Each layer of service is continually improved to ensure it remains world-class and delivers on our promise of reliability.



Specifications

Copier

Copying process:	Dry electrostatic transfer system
Copy speed:	
MP C2051:	B/W / full colour: 20 copies per minute
MP C2551:	B/W / full colour: 25 copies per minute
Resolution:	600 dpi
Multiple copy:	Up to 999
Warm-up time:	Less than 22 seconds ¹
First output speed:	
Black and white:	Less than 6.3 seconds
Full colour:	Less than 9.2 seconds
Zoom:	25 - 400% (in 1% steps)
Memory:	
Standard:	1.5 GB
	+ 160 GB HDD
Paper input capacity:	
Standard:	2 x 250-sheet paper trays 1 x 100-sheet bypass tray
Maximum:	1,600 sheets
Paper output capacity:	Maximum: 650 sheets
Paper size:	A5 - A3
Paper weight:	
Paper tray 1:	60 - 256 gsm
Paper tray 2:	60 - 169 gsm
Bypass tray:	52 - 256 gsm
Duplex tray:	60 - 105 gsm
Dimensions (W x D x H):	587 x 676 x 845 mm (with ARDF)
Weight:	Less than 100 kg (with ARDF)
Power source:	220 - 240 V, 50/60 Hz
Power consumption:	
MP C2051:	514 W
MP C2551:	540.5 W

Printer

Print speed:	
MP C2051:	B/W / full colour: 20 prints per minute
MP C2551:	B/W / full colour: 25 prints per minute
Printer language:	
Standard:	PCL5c, PCL6
Option:	Adobe® PostScript® 3™
Resolution:	Up to 1,200 dpi
Interface:	
Standard:	USB 2.0 print interface 2 x USB host interface Ethernet 10 base-T/100 base-TX
Option:	IEEE 1284/ECP Wireless LAN (IEEE 802.11a, b, g, WPA support) Ethernet 1000 base-T Network protocol: TCP/IP (IPv4, IPv6), IPX/SPX,

Supported environments:

Windows®	2000/XP/Windows 7/Vista/Server 2003/Server 2008
Macintosh	OS X v10.2 or later (native mode)
Novell® Netware®	3.12/3.2/4.1/4.11/5.0/5.1/6/6.5
Sun® Solaris	2.6/7/8/9/10
HP-UX	10.x/11.x/11iv3
SCO OpenServer	5.0.6/5.0.7/6.0
RedHat® Linux	6.x/7.x/8.x/9.x/Enterprise
IBM® AIX	v4.3/5L v5.1/5L v5.2/5L v5.3
SAP® R/3®	3.x or later, mySAP ERP2004 or later
NDPS Gateway	
IBM AIX V4.3 & 5L Version	5.1/5.2/5.3
AS/400®	using OS/400 Host Print Transform

Scanner

Scan speed:	
B/W:	44 images per minute (LEF, A4)
Full colour:	44 images per minute
Resolution:	Maximum 1,200 dpi TWAIN
Original size:	A5 - A3
Output formats:	PDF/JPEG/TIFF/High compression PDF
Bundled drivers:	Network, TWAIN
Scan to email:	SMTP, POP3
Scan to email destination addresses:	Maximum 500 per job
Stored destination addresses:	Maximum 2,000
Address book:	Via LDAP or locally on Hard Disk Drive
Scan to folder:	SMB, FTP, NCP
Destination:	Maximum 50 folders per job

Software (Standard)

- App2Me
- SmartDeviceMonitor™
- Web SmartDeviceMonitor™
- Web Image Monitor
- DeskTopBinder™ Lite

Software (Optional)

- GlobalScan NX
- ESA Transformer

Fax (optional)

Circuit:	PSTN, PBX
Compatibility:	ITU-T (CCITT) G3
Modem speed:	Maximum 33.6 Kbps
Resolution:	
Standard/detail:	200 x 100/200 dpi
Maximum:	400 x 400 dpi (option)
Compression method:	MH, MR, MMR, JBIG
Scanning speed:	36 sheets per minute
Memory capacity:	
Standard:	8 MB
Maximum:	32 MB
Memory backup:	Yes

Other options

2 x 500-sheet paper trays, Cabinet, Internal 500-sheet finisher, Punch unit, Shift tray, Inner one bin tray, Side output tray, Envelope feeder, Optional Counter interface, IPDS unit, Camera Direct Print Card, USB2.0/SD slot, File Format Converter, Fax unit, 32 MB Fax Memory unit, Professional software solutions.

¹Warm-up time and power consumption may differ depending on the conditions and environment of the machine.

For availability of models, optional apparatus and software, please consult your local Ricoh supplier.



Hotline

01111114194

فرع فيصل: 3 ش فهمي حجازي - من حسن عبد العال - متفرع من ش فيصل - أمام إدارة الهرم التعليمية
ت: 01112000561-01112000645-33935880-33935881
فرع مدينة نصر: 17 ش عبد الحكيم الرفاعي - من ش عباس العقاد - أمام الحديقة الدولية
ت: 01112000539-01112000568-26721840-26721839
فرع اسكندرية: وابور المياة 25 ش أحمد ذكي أبو شادي - متفرع من ش المنارة - أمام نادي مياة أسكندرية
ت: 01211644002-01211644470-01211634446-01211644005-4252158