

RICOH



Ricoh Aficio MP 4002/MP 5002

Multifunction B&W

✓ Copier ✓ Printer ✓ Facsimile ✓ Scanner



MP 4002

40
ppm
black
and white

MP 5002

50
ppm
black
and white


Alansar
Digital Copiers
Hotline
01111114194

فرع فيصل: 3ش فهمي حجازي- من حسن عبد العال -متفرع من ش فيصل- أمام إدارة الهرم التعليمية
ت: 01112000561-01112000645-33935880-33935881
فرع مدينة نصر: 17 ش عبد الحكيم الرفاعي- من ش عباس العقاد - امام الحديقة الدولية
ت: 01112000539-01112000568-26721840-26721839
فرع اسكندرية: واپور المياة 25 ش أحمد ذكي أبو شادي- متفرع من ش المنارة - أمام نادي مياة أسكندرية
ت: 01211644002-01211644470-01211634446-01211644005-4252158

Customize workflow to maximize productivity

Greater workloads. Fewer resources. Less time. Your business challenges are constantly changing, so choose the RICOH® Aficio® MP 4002/MP 5002 digital imaging system to stay ahead of the competition. The services led platform of the 40 ppm and 50 ppm black-and-white multifunctional devices offer a customizable control panel, access to cloud-based solutions and support for user mobility with secure mobile printing capabilities.

The powerful Ricoh Aficio MP 4002/MP 5002 combines advanced copy, print, scan and fax capabilities in a sleek, intuitive design to streamline everyday document management tasks to enhance office productivity. Advanced Device Management, integration with Ricoh workflow solutions and customized interactivity support your unique business requirements. In addition, you can easily integrate the system into a Ricoh Managed Document Services (MDS) strategy for productive, cost-effective performance throughout your enterprise.



Advanced capabilities, enhanced efficiency

Powerful Performance

The impressive Ricoh Aficio MP 4002/MP 5002 delivers a wide range of advanced capabilities for reliable document management that improves workgroup productivity.

- Print and copy up to 50 pages-per-minute for exceptional throughput to meet your busiest demands.
- Add the final touches to your documents with three finishing options, including a 2,000-Sheet Booklet Finisher.
- Use Auto Job Promotion to minimize downtime and maximize efficiency. This feature moves print jobs higher in the queue to skip error print jobs.

Flexible Printing and Network Functionality

Enjoy full compatibility throughout the office with a host of network capabilities engineered specifically to enhance efficiency.

- Print from most manufacturers' smartphones by downloading their application for convenient output when and where it's needed most.
- Take advantage of 1 GB RAM and a 128 GB Hard Disk Drive (HDD)* to store and manage more documents.
- Generate output at the device using a USB memory or SD card for incredible convenience and flexibility. Users can insert the card into a slot on the operation panel to begin printing in seconds—no computer is necessary.
- Ensure efficient production of reports, presentations and training materials with standard support for PCL or optional Adobe® PostScript® 3™.

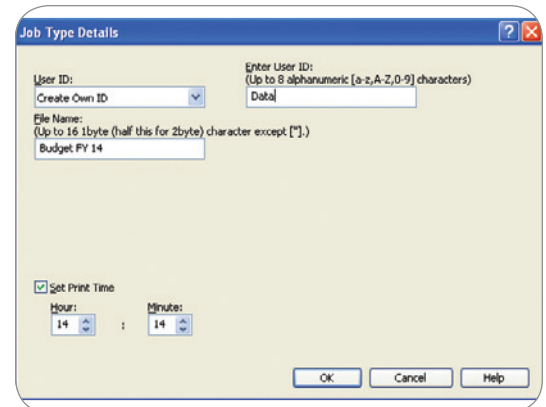
Convenient Scanning and Distribution

Improve the way your organization shares documents and simplify workflow, reduce costs and facilitate effective communications.

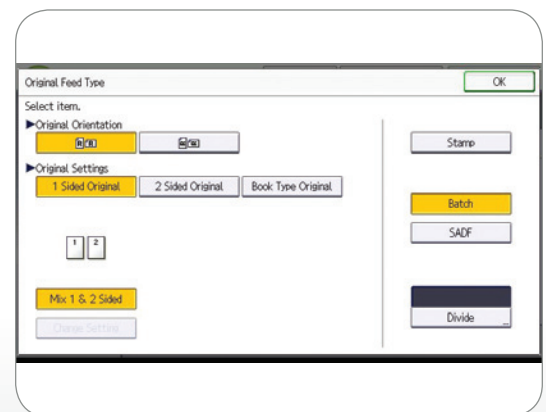
- Scan full-color or black-and-white originals and share them instantly with Scan-to-Email/Folder/HDD.
- Preview files on the control panel before printing from USB/SD Card for quality assurance prior to distribution.
- Access LDAP-registered directories and information, including Home Directory, quickly with one-touch operation at the device for fast, convenient scanning and easier, cost-effective administration.
- Compress file sizes for full-color scans with the High Compression PDF function and produce quality results with faster distribution.



Insert a USB/SD card and print documents directly from the Ricoh Aficio MP 4002/MP 5002 for incredible convenience at any time.



Set specific print times with Scheduled Print to minimize network traffic congestion during busy office hours.



Enhanced Batch Scan enables users to toggle settings to scan either one side or both sides of originals in a single batch scan job.

*Standard on SP Models.

Optimize production, distribution, security and document management in one easy-to-use system



Inner One-Bin Tray (Optional)

Provides a cost-effective way to separate copy, print and fax output.

Professional In-line Finishing Capabilities

Choose finishing options to design and complete end-to-end document production that encourages more productivity for more profitability. Ricoh Aficio MP 4002/MP 5002 finishing options include:

1,000-Sheet Finisher

Holds up to 1,000 sheets of 8.5" x 11" or smaller and 20 lb. Bond (500 sheets of 8.5" x 14" or larger) and offers automatic three-position stapling.

2,000-Sheet Booklet/Saddle Stitch Finisher

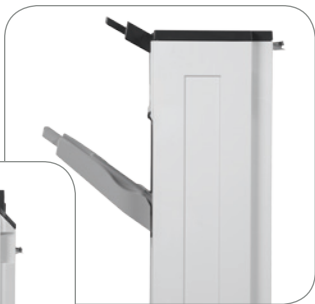
Staples documents automatically to produce professional-grade booklets with a variety of staple positions and optional 2- or 3-hole punching.

3,000-Sheet Multi-Tray Finisher

Enhances productivity, convenience and versatility with high-capacity trays, optional 2- or 3-hole punching and multi-position stapling for a wide range of paper weights and sizes.



1,000-Sheet Finisher



2,000-Sheet Booklet/Saddle Stitch Finisher



3,000-Sheet Multi-Tray Finisher



Dual 550-Sheet Paper Trays

Increases productivity and efficiency by reducing paper reloads.

Two 550-Sheet Tray Paper Bank (Optional)

Holds up to five different sizes and orientations of paper for maximum versatility.

2,000-Sheet (Letter-Sized) Large Capacity Tray (Optional/Not Shown)

Over/Underhand-Grip Tray Handles and Easy-Open Trays

Ensures effortless paper loading for all users.



100-Sheet Automatic Reversing Document Feeder (ARDF)

Handles multi-page and double-sided originals up to 11" x 17".



Easy-to-Replace Toner Cartridge

Ensures quick replacement of toner and minimizes maintenance time.

Intuitive Programming

The user-friendly, adjustable control panel includes a customizable Home Screen to minimize steps and expedite operations.



Automatic Stackless Duplexing

Produces two-sided booklets, brochures and more while reducing paper usage by half.

100-Sheet Stack Bypass

Holds a range of paper types and weights up to 58 lb. (216 gsm) Bond.



Document Server (standard on Print/Scan configuration)

Stores up to 3,000 frequently used documents for instant reprinting, refaxing or redistribution.

Large Capacity Tray (Optional)

Contains an additional 1,200 letter-sized sheets to maintain operations with minimal user intervention during large jobs.

Ricoh Aficio MP 4002/MP 5002 Main Unit

Maximize productivity with 40/50 ppm/cpm output speeds, 600 x 600 dpi image quality and support for media up to 58 lbs (216 gsm). Standard paper sources include two 550-sheet trays and optional paper sources bring total capacity to 4,400 sheets. Enhance performance with optional faxing.

Every tool for every task

User-Friendly Operations

The Ricoh Aficio MP 4002/MP 5002 offers a sleek, streamlined style that simplifies user interaction and accessibility to its feature-rich offerings.

- Access functions quickly and easily with the full-color, tiltable operation panel.
- Customize your personal Home Screen and display only the icons you use most frequently for fast, one-step operation.
- Assign functions and preferences with five one-touch function keys for more effective workflow.
- Set up an external keyboard via USB to expedite operating tasks for users who are more comfortable with traditional keyboard input.

Next-Generation Faxing

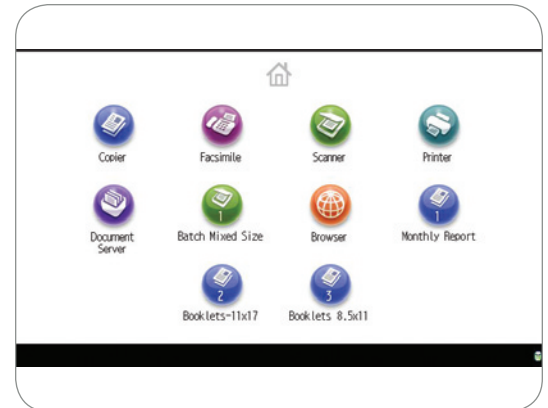
Reduce costs and minimize transmission time with impressive fax capabilities that provide a cost-effective option for distributing documents.

- Take advantage of up to three analog lines with the Super G3 modem to improve total fax capacity and minimize bottlenecks.
- Distribute documents directly to e-mail addresses and eliminate long-distance costs with Internet Fax capabilities.
- Forward inbound faxes to e-mail addresses, network folders or the system's HDD* for easy, fast and free paperless faxing.

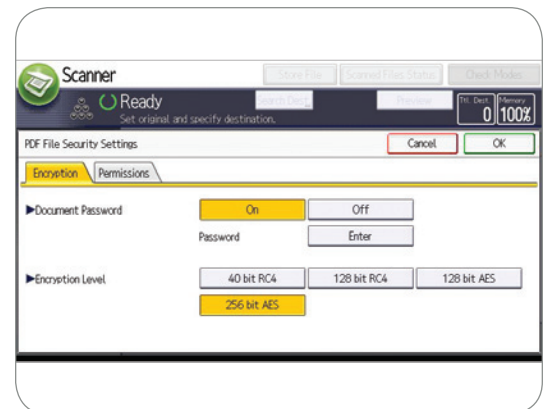
Document Security and Integrity

The Ricoh Aficio MP 4002/MP 5002 incorporates a host of state-of-the-art security features to help protect critical information at every stage of the document lifecycle.

- Overwrite all stored data on the hard disk drive and encrypt the address book, authentication information and stored documents using standard HDD* overwrite/encryption.
- Secure and destroy latent images and data from the system's internal HDD* with the standard DataOverwriteSecurity System (DOSS).
- Prevent unauthorized access to certain functions with password-protected and user-specific authentication.
- Store print jobs at the device until an authorized user swipes an ID card or enters ID information at the control panel to release the job.
- Stop unauthorized duplication of sensitive documents with Unauthorized Copy Control—a critical feature for workgroups that regularly handle sensitive data.



Each user can access a personal Home Page on the operation panel that displays only frequently used icons for fast, easy access to core everyday functions.



Prevent unauthorized users from obtaining critical information with robust safety encryption algorithms, including AES256bit and SHA-2.



Protect the integrity of data stored on the hard disk drive for the life of the device with HDD* overwrite/encryption.

*Standard on SP Models.

Total command and control

Easy, Efficient Administration

User-friendly management tools simplify administrative tasks, including maintenance and monitoring, while fostering more efficient operations.

- Reduce the amount of unnecessary output by establishing print and copy quotas for up to 1,000 individual users.
- Configure system settings and address books and check device status with Web Image Monitor.
- Ensure optimal system performance with remote firmware upgrades.
- Enhance your organization's workflow and take advantage of Ricoh's Embedded Software Architecture with Ricoh applications.

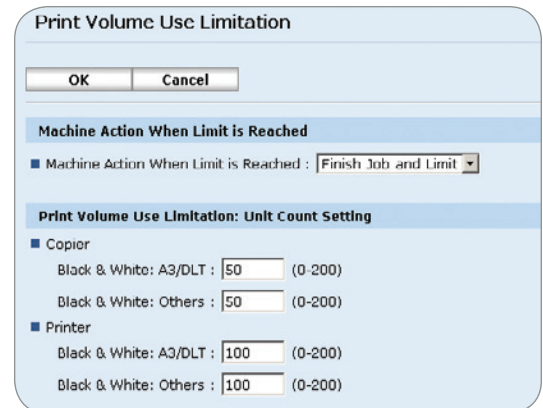
User-Friendly Management Make Every Administrator's Life Easier with Intuitive Tools for System Management, Device Monitoring, Troubleshooting and Other Tasks

- Configure system settings, address books and more with Web Image Monitor.
- Manage multiple Ricoh devices remotely with Web SmartDeviceMonitor*.
- Request alerts for low supplies or error detection with Auto E-mail Notification.
- Automate service calls with the available @Remote™ service, which can be configured to notify service and supply alerts.

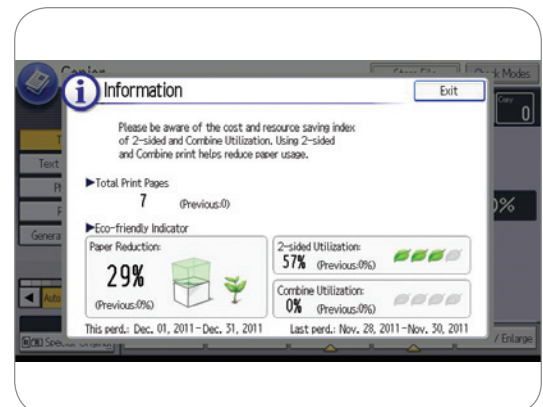
Sustainable Efficiency

Conserve energy and paper resources while boosting productivity. Ricoh has incorporated a variety of environmentally-friendly features that conserve time and money.

- Reduce paper consumption by printing double-sided documents—and reducing output by up to half—with standard easy-to-use, high-performance automatic duplexing for copying and printing.
- Start printing and copying quickly. The Ricoh Aficio MP 4002/MP 5002 (copier basic) recovers from Sleep Mode in less than 12/15 seconds and 11/15 seconds for the MP 4002/MP 5002 (print/scan).



Minimize total cost of ownership, promote environmental stewardship and help free up IT resources with Quota Setting.



Visualize cost and paper resources by displaying the Eco-Friendly indicator, showing the percentage of paper reduction achieved.

The Total Green Office Solution



Ricoh continues its longstanding commitment to developing office solutions with environmentally friendly and superior energy- and supply-saving features, without compromising productivity.

*Available as a download from Ricoh.

Engine/Copier Specifications

Configuration	Desktop
Scanning Element	One Dimension solid scanning through CCD
Printing Process	Twin Laser Beam Scanning & Electrophotographic Printing
Toner	Dry, Dual Component
System Memory (RAM) (Min./Max.)	Copier Basic: 512 MB RAM/1 GB RAM Print/Scan: 1 GB RAM
Hard Disk Drive	Print/Scan: 128 GB Standard 128 GB Optional for Copier Basic 100-Sheet ARDF (Standard)
Document Feeder	600 x 600 dpi
Copy Resolution	256 levels
Grayscale	Manual & Automatic (Standard)
Exposure Adjustment	Up to 999
Quantity Indicator	Book/Sheet
Original Type	Up to 11" x 17"
Maximum Original Size	5.5" x 8.5" to 11" x 17"
Copy Size	Plain Paper, Transparencies, Recycled Paper, Cardstock, Letterhead, Envelope
Copy Type	MP 4002: 4.1 seconds MP 5002: 3.5 seconds
First Copy Speed	MP 4002: 40 copies/minute (LTR) MP 5002: 50 copies/minute (LTR)
Continuous Copying Speed	Copier Basic: Less than 15 seconds Print/Scan: Less than 19 seconds
Warm-up Time (from main Switch On)	Copier Basic: Less than 12/15 seconds (MP 4002/MP 5002)
Recovery Time from Sleep Mode	Print/Scan: Less than 11/15 seconds (MP 4002/MP 5002)
Typical Electricity Consumption (TEC)	MP 4002: 2.89kWh (Copier Basic) MP 4002: 2.87kWh (Print/Scan) MP 5002: 3.56kWh (Copier Basic) MP 5002: 3.49kWh (Print/Scan)
Power Source	120V/60Hz, 12A
Sleep Mode	Copier Basic: 1W (MP 4002/MP 5002)
Power Consumption	Print/Scan: 2.7W (MP 4002/MP 5002)
Dimensions	26.38" (W) x 26.85" (D) x 35.24" (H) (670 x 682 x 895 mm)
Weight	Less than 213.8 lbs. (97 kg)
Standard Paper	550 sheets x 2 trays
Capacity	100-Sheet Bypass Tray
Optional Paper Capacity	550 sheets x 2 trays or 2,000 x 1; 1,200-Sheet Large Capacity Tray (LCT)
Paper Size	Tray 1 & 2: 7.25" x 10.5" to 11" x 17" (Executive - A3); Bypass: 5.5" x 8.5" (SEF) to 11" x 17" (A5 - A3)
Paper Weight	Tray 1 & 2: 16 - 57 lb. Bond/60 - 216 g/m ² Bypass: 14 - 58 lb. Bond/52 - 220 g/m ² Duplex: 16 - 44 lb. Bond/60 - 169 g/m ²
Reduction Ratios	25%, 50%, 65%, 73%, 78%, 85%, 93%
Enlargement Ratios	121%, 129%, 155%, 200%, 400%
Zoom	25% to 400% in 1% increments
Standard Features	Auto Magnification, Auto Paper Select, Auto Tray Switch, Center/Border Erase, Chapters, Combine Mode, Cover Insertion, Date Stamp, Directional Magnification, Double Copy, Electronic/Rotate Sorting, English Preset Stamps, Bates Stamp (numbering), Full-Color WVGA Touch Screen, 25 Job Programs, Negative/Positive, OHP Slip Sheet, Page Number Stamp, Paper Designate, Sample Copy, Simple Screen, 1,000 User Codes
Requires Hard Disk Drive for Copier Basic Models	Document Server, Stamping on Copies
Printer Specifications	
(Standard on Print/Scan Configuration/Option on Copier Basic Configuration)	
Print Speed	MP 4002: 40 ppm MP 5002: 50 ppm
CPU	RM7035C-533 MHz
Standard Interfaces	10BaseT/100BaseTX, USB 2.0
Optional Interfaces	IEEE 802.11a/b/g Wireless LAN, Bluetooth, Gigabit Ethernet, IEEE 1284
Memory Capacity	Shared with Copier Memory
Network Protocol	TCP/IP, IPX/SPX

Network Operating Systems

Windows XP/Vista, Server 2003/Server 2008/Server 2008R2 and Windows 7
Netware Server 6.5**, UNIX; Sun Solaris, HP-UX, SCO OpenServer, RedHat Linux, IBM AIX, Mac OS, OS X 10.2 or later, SAP R/3, NDPS Gateway, IBM iSeries/AS/400 using OS/400 Host Print Transform
Web Image Monitor, Embedded @Remote Standard PCL 5e/6, PDF, Direct Print and Adobe® PostScript® 3/1PDS (Optional)
Up to 600 dpi
45 Intellifonts, 13 International Fonts
136 Roman Fonts
Standard Features
Sample/Locked/Hold/Stored Print/

Utilities

Page Description Languages	Web Image Monitor, Embedded @Remote Standard PCL 5e/6, PDF, Direct Print and Adobe® PostScript® 3/1PDS (Optional)
Print Resolution	Up to 600 dpi
Fonts for PCL 5e/6	45 Intellifonts, 13 International Fonts
Fonts for PS3	136 Roman Fonts
Standard Features	Sample/Locked/Hold/Stored Print/

Scanner Specifications

(Standard on Print/Scan Configuration/Option on Copier Basic Configuration)	
Embedded Scanning Speed	BW: 61 ipm (@200 dpi, 8.5" x 11" LEF) FC: 31 ipm (@200 dpi)
Scanning Resolution	Up to 600 dpi
Grayscale	256 levels
Scan Area	Up to 11" x 17"
Standard Interfaces	10BaseT/100BaseTX Ethernet
Optional Interfaces	Wireless LAN (802.11a/b/g), Gigabit Ethernet

Protocol

Memory Capacity	Shared with Copier Memory
Standard Features	Embedded Scan-to-Email, HDD, Folder, URL, Color Scanning
File Formats	Single-Page and Multi-Page TIFF, PDF, High Compression PDF, Single-Page JPEG, Single and Multiple page PDF/A

** Requires Netware and Print/Scan Options

Fax Specifications

(Option)	
Circuit	PTSN, PBX
Compatibility	ITU-T G3
Resolution	200 x 200/100 dpi (Standard) 400 x 400 dpi (Optional)
Compression Method	MH, MR, MMR, JBIG
Scanning Speed	0.90 seconds 8.5 x 11" (A4 SEF)
Modem Speed	33.6 Kbps with Auto Fallback
Transmission Speed	G3: 3 seconds per page (MMR Compression) G3: 2 seconds per page (JBIG Compression)

Memory (SAF)

Memory Backup	1 hour
Auto Dials	2,000 with HDD
Group Dials	100 (max. 500 numbers per group)
ID Code Programming	4 digits
User Function Key	3 keys
Standard Features	Dual Access, Image Rotation, LAN-Fax Capability*, Internet Faxing (T.37)*, IP Faxing (T.38)*, Fax Forwarding to E-mail/HDD/Folder*

Optional Features

Simultaneous operation of up to 3 lines (G3 x 3)
--

Security Features

(Standard on Print/Scan Configuration/Option on Copier Basic Configuration)	
HDD Encryption, HDD Data Overwrite, SMTP over SSL, S/MIME, IPsec Communication, Locked Print Password Encryption, Encrypt Address Book, SSL Secure Socket Layer, Windows/LDAP/User Authentication, SNMP v3, Encryption of Password PDF, Encrypted PDF, IP Filtering, Quota Limit Setting	

Finishing Options

One-Bin Tray BN3100 (Option)	
Paper Size	5.5" x 8.5" - 11" x 17"/A5 - A3
Paper Weight	16 to 50 lb. Bond/60 - 169 g/m ²
Paper Capacity	125 sheets
SR3090 Finisher (Option)	
Paper Size	5.5" x 8.5" - 11" x 17"/A5 - A3
Paper Weight	14 to 69 lb. Bond/52 to 260 g/m ² (Proof Tray) 14 to 43 lb. Bond/52 to 163 g/m ² (Shift Tray)

Stack Capacity

Proof Tray: 250 sheets (8.5" x 11" or smaller); 50 sheets (8.5" x 14" or larger)
Shift Tray: 1,000 sheets (8.5" x 11" or smaller); 500 sheets (8.5" x 14" or larger)
50 sheets (8.5" x 11")
30 sheets (8.5" x 14" or larger)
1 staple/2 positions; 2 staples/1 position
10.7" (W) x 20.5" (D) x 31.2" (H) (270 x 520 x 790 mm)

SR3110 Booklet Finisher (2,000 Sheet Option)

Paper Size	5.5" x 8.5" - 11" x 17"/A5 - A3
Paper Weight	14 to 43 lb. Bond/52 to 163 g/m ² (Proof Tray) 14 to 68 lb. Bond/52 to 256 g/m ² (Shift Tray)

Stack Capacity

Proof Tray: 250 sheets (8.5" x 11" or smaller); 50 sheets (8.5" x 14" or larger)
Shift Tray: 2,000 sheets (8.5" x 11" LEF), 1,000 sheets (8.5" x 11" - 11" x 17") SEF
100 sheets (5.5" x 8.5")

Staple Capacity

50 sheets (8.5" x 11")
30 sheets (8.5" x 14" or larger)

Staple Position

1 staple/2 positions; 2 staples/2 positions

Saddle Stitch

30 sets (2 - 5 sheets); 15 sets (6 - 10 sheets); 10 sets (11 - 15 sheets)

Dimensions

25.9" (W) x 25.1" (D) x 37.8" (H) (657 x 613 x 960 mm)
--

SR3120 Finisher (3,000 Sheet Option)

Paper Size	5.5" x 8.5" - 11" x 17"/A5 - A3
Paper Weight	14 to 43 lb. Bond/52 to 163 g/m ² (Proof Tray) 14 to 68 lb. Bond/52 to 256 g/m ² (Shift Tray)

Stack Capacity

Proof Tray: 250 sheets (8.5" x 11" or smaller); 50 sheets (8.5" x 14" or larger)
Shift Tray: 3,000 sheets (8.5" x 11" LEF), 1,500 sheets (8.5" x 11" - 11" x 17") SEF
50 sheets (8.5" x 11")

Staple Capacity

30 sheets (8.5" x 14" or larger)

Staple Position

1 staple/3 positions; 2 staples/1 position
--

Dimensions

25.9" (W) x 25.1" (D) x 37.8" (H) (657 x 613 x 960 mm)
--

Hardware Accessories

LCIT RT3020 Side Large Capacity Tray (Option)	
Paper Size	11" x 8.5"/A4 (LEF)
Paper Weight	16 to 57 lb. Bond/60 - 216 g/m ²
Paper Capacity	1,200 sheets
Dimensions	13.7" (W) x 21.3" (D) x 11.4" (H) (348 x 540 x 290 mm)
PB3130 Paper Feed Unit (Option)	
Paper Size	7.25" x 10.5" - 11" x 17"/Executive - A3
Paper Weight	16 to 57 lb. Bond/60 - 216 g/m ²
Paper Capacity	550 sheets x 2
Dimensions	22.8" (W) x 24.8" (D) x 10.2" (H) (580 x 629 x 260 mm)

LCIT PB3140 Large Capacity Tray (Option)

Paper Size	8.5" x 11"/A4 (LEF)
Paper Weight	16 to 57 lb. Bond/60 - 216 g/m ²
Paper Capacity	2,000 sheets
Dimensions	22.8" (W) x 24.8" (D) x 10.2" (H) (580 x 629 x 260 mm)

Additional Accessories

Bluetooth Interface Unit Type D, Bridge Unit Type BU3060, Copy Data Security Unit Type G, FAC56 Cabinet, Fax Option Type 5002, File Format Converter Type E, G3 Interface Unit Type 5002, Gigabit Ethernet Board Type A, Handset Type C5502, IEEE 1284 Interface Board Type A, IEEE 802.11a/g Interface Unit Type J, VM Card Type U*, Key Counter Bracket Type H, Optional Counter Interface Unit Type A, PostScript3 Unit Type 5002, Punch Unit PU3030 (for SR3120 & SR3110), Fax Connection Unit Type A, Memory Unit Type B 32 MB, Side Tray Type C5502, Internal Shift Tray SH3060, Hard Disk Drive Option Type 5002, Printer/Scanner Unit Type 5002*, SD Card for Network Printing Type K, Browser Unit Type I, ADF Handle Type C, Platen Cover Type 3352, IPDS Unit Type 5002, Card Reader Bracket Type 3352

*Options for Copier Basic

فرع فيصل: 3 ش فهمي حجازي - من حسن عبد العال - متفرع من ش فيصل - امام ادارة الهرم التعليمية

ت: 01112000561-01112000645-33935880-33935881

فرع مدينة نصر: 17 ش عبد الحكيم الرفاعي - من ش عباس العقاد - امام الحديقة الدولية

ت: 01112000539-01112000568-26721840-26721839

فرع اسكندرية: وابور المياة 25 ش احمد ذكي ابو شادي - متفرع من ش المنارة - امام نادي مياة اسكندرية

ت: 01211644002-01211644470-01211634446-01211644005-4252158



Hotline
01111114194