

Aficio®

2022 & 2027

Complete Document Solutions ...
Now Within Reach



PRINT
COPY
SCAN
FAX
MANAGE

RICOH®


Alansar
Digital Copiers
Hotline
01111114194

فرع فيصل: 3ش فهمي حجازي - من حسن عبد العال - متضرع من ش فيصل - أمام إدارة الهرم التعليمية
ت: 01112000561-01112000645-33935880-33935881
فرع مدينة نصر: 17ش عبد الحكيم الرفاعي - من ش عباس العقاد - أمام الحديقة الدولية
ت: 01112000539-01112000568-26721840-26721839
فرع اسكندرية: وابور المياة 25 ش أحمد ذكي أبو شادي - متضرع من ش المنارة - أمام نادي مياة أسكندرية
ت: 01211644002-01211644470-01211634446-01211644005-4252158

Affordable multifunctionality for your growing business.

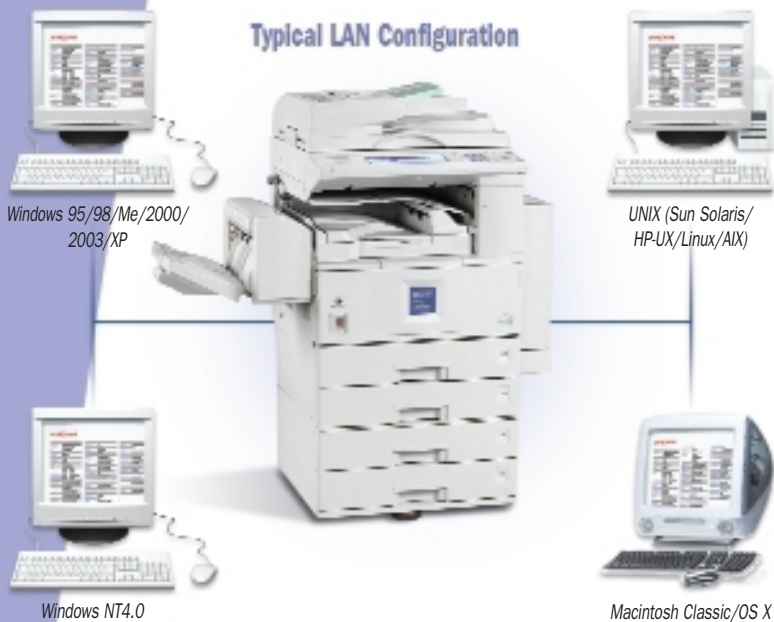
2022 & 2027

The Aficio 2022/2027 Series is designed to meet the expanding needs of growing businesses and workgroups.

Compact and affordable, the Aficio 2022/2027 Series packs all the functionality you need to streamline communications, boost productivity, and reduce costs in a single, space-saving system. As a whole, the expandable Aficio 2022/2027 Series is much greater than the sum of its parts. It puts affordable document creation, distribution, and management within your reach so you can get work done faster and easier than ever before with:

- **Network Printing.** One powerful print engine that will improve image and document quality—every set is a finished digital original.
- **Digital Copying.** Produce high-quality images at 22/27 prints per minute with a number of document and image manipulation features that ensure every page looks its best.
- **Network scanning.** Scan-to email, folder, and FTP Server capabilities speed business communications.
- **Paperless faxing.** Send faxes right from your desktop and route all inbound fax documents to recipients electronically.
- **Document Management.** Manage all copy, print, scan and fax jobs from the control panel or through Web Image Monitor.

Typical LAN Configuration



For unmatched flexibility, the Aficio 2022/2027 Series offers multiple ways to connect:

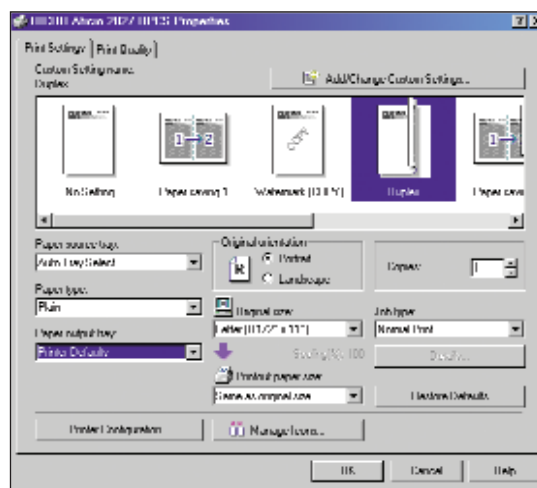
- Standard 10/100BaseT Ethernet interface lets every connected user print to the system at will.
- Optional 802.11b wireless, USB, Bluetooth, and IEEE 1394 interfaces are available to support your specialized connectivity needs.

In addition to standard support for PCL5e/6 as well as optional Adobe PostScript 3, Ricoh makes printing even easier by providing its own Refined Print Command Stream (RPCS™) with every system. This icon-based PDL and driver provides comprehensive job control so even novice users can create documents with desired results the first time.

Power to Share, Power to Spare

Do away with those older, slower, desktop printers and send all print jobs to a cost-effective shared system that offers all the speed and features you're accustomed to finding on copiers, like duplexing and finishing. The Aficio 2022/2027 Series features a powerful 400MHz processor and a Network Interface Card to accept print jobs from multiple networked users without delay.

Intuitive drivers make printing easy: ►
Create professional-looking documents in just a few clicks.



DIGITAL COPYING
COPYING



Documents with a Professional Finish

Featuring superior 600-dpi image quality at 22/27 pages-per-minute, the Aficio 2022/2027 Series offers unmatched copying versatility. The optional Auto Reversing Document Feeder efficiently processes one- and two-sided originals—even mixed size originals in the same job. Fast warm-up and first copy times minimize lines at the copier, while Scan Once, Print Many saves time and ensures consistency by producing up to 99 sets from a single scan. Standard Stackless Duplexing automates the production of two-sided copies. It cuts your paper consumption in half, reduces filing space requirements, and saves on postage costs.

Touch-screen LCD and Control Panel

Image and document manipulation features are clearly organized with graphic illustrations to make walk-up job programming simple for every user. ▼



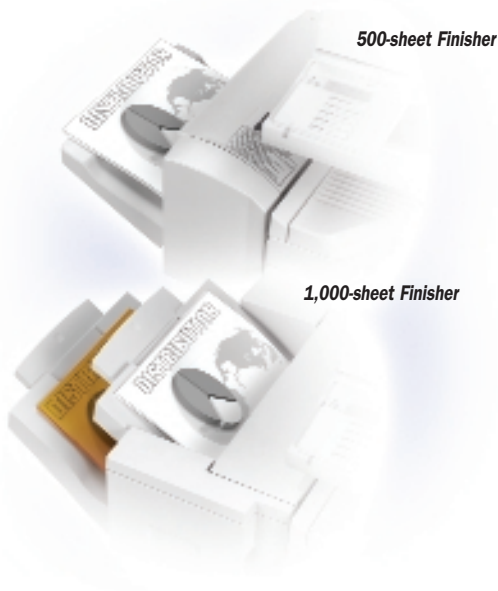
▲ 50-sheet Auto Reversing Document Feeder

Processes originals at the rated machine speed for fast image capture when scanning, copying, or faxing originals as large as 11" x 17".

And because the Aficio 2022/2027 Series is digital, you can add time, date, and page number stamps to copy sets, sort them electronically, and even combine multiple originals onto a single page, all contributing to a more productive office.



When it comes to finishing the job, no one provides more flexibility than Ricoh. Choose either the 500 or 1,000-sheet Finisher with automatic stapling. If simple set collation is all you require, the economical Shift Tray works with the Aficio 2022/2027 Series' standard Electronic Sort and Rotate Sort modes to make set separation easy.



500-sheet Finisher

1,000-sheet Finisher



▲ Versatile Paper Supply

The Aficio 2022/2027 Series offers a four-way 3,100-sheet maximum paper capacity to handle the diverse needs of multi-user environments throughout the business day. Standard stackless duplexing enables the efficient production of two-sided copies.

NETWORK SCANNING



Digitize Your Documents

Let the Aficio 2022/2027 Series be your gateway to a host of electronic document distribution and storage capabilities. There are no hidden costs; no delivery server is required, no additional software to install. The Aficio 2022/2027 Series integrates seamlessly with your existing intranet and Internet technology to enable leading-edge document delivery solutions.

- Store and access up to 2,000 E-Mail addresses right at the Aficio 2022/2027 Series' LCD touch panel display.
- Embedded Scan-to-E-mail with LDAP supports SMTP Authentication and POP Before SMTP Authentication.
- Wide selection of industry standard file formats including TIFF, TIFF-F, Multipage TIFF, PDF and JPEG.
- Complete control over scan settings such as resolution, original size and type, image density, document file naming and destination(s) for every job.
- Securely deliver up to 2 GB files to a shared Windows folder or FTP server.

Secure, Local Document Storage

Leverage the power of the Aficio 2022/2027 Series' 20GB Document Server as an on-site virtual document library for archival or print-on-demand applications.



▲ **Send digital files instantly and at no cost:** Send E-mails to recipients at network speed with LDAP support. Enter subject and file name using the QWERTY keyboard that appears on the LCD panel.

- Store up to 3,000 documents or up to 9,000 pages on the Document Server.
- Search and retrieve documents at the control panel, or via a Web Browser utilizing the Web Image Monitor Utility.
- Retrieved documents can be Re-printed, Re-faxed, Re-scanned or downloaded to your computer for editing.

Super G3 Faxing: Serverless & Flawless

For many businesses and workgroups faxing remains a familiar and efficient means of information distribution. Add the Fax option to the Aficio 2022/2027 Series to round out your communication capabilities with Super G3 33.6Kbps faxing. With transmission speeds as fast as three seconds per page, you'll save on per-call charges. Add a second Super G3 line to double your faxing capacity and minimize wait times and busy signals.

Paperless, Serverless Faxing

The Aficio 2022/2027 Series delivers all the capabilities you'd expect on single-function fax machines, up to 2,000 Speed Dial locations, polling, broadcasting, batch transmission, and more. But Aficio 2022/2027 Series faxing productivity doesn't stop there. If you prefer to handle business communications through E-mail, the Aficio 2022/2027 Series offers the ability to convert and forward incoming faxes directly to specified E-mail addresses.

LAN Fax

Complete the paperless cycle by sending outbound transmissions right from your desktop. Aficio 2022/2027 Series' LAN-Fax capability lets you send documents with customized cover sheets to as many as 500 recipients. Import addresses from other LAN-Fax software and populate your address book without rekeying. Preview documents in the LAN-Fax driver before sending, and check transmission results with Web Image Monitor.

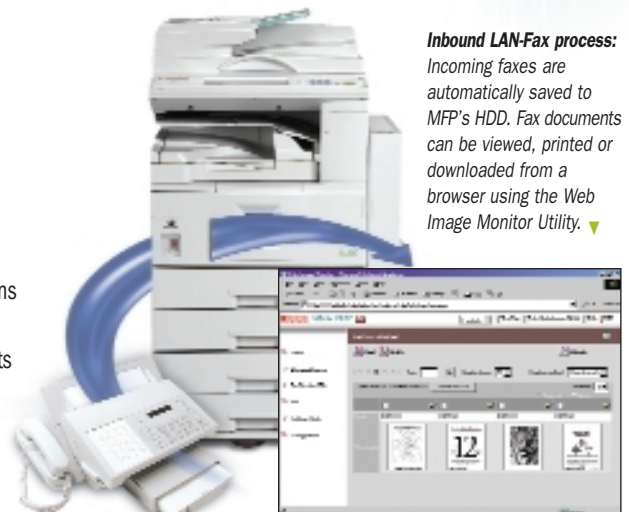
Internet Faxing (T.37)

What's more, the Aficio 2022/2027 Series is T.37 Internet fax capable, so you can scan hardcopy originals and send them as faxes over the internet. Internet addresses can be stored in the system's local address books facilitating long distance communications to other T.37 Internet fax capable machines *without cost*.



FAXING

▼ **Inbound LAN-Fax process:** Incoming faxes are automatically saved to MFP's HDD. Fax documents can be viewed, printed or downloaded from a browser using the Web Image Monitor Utility. ▼





DOCUMENT MANAGEMENT

Advanced Management Tools: The Power to Control

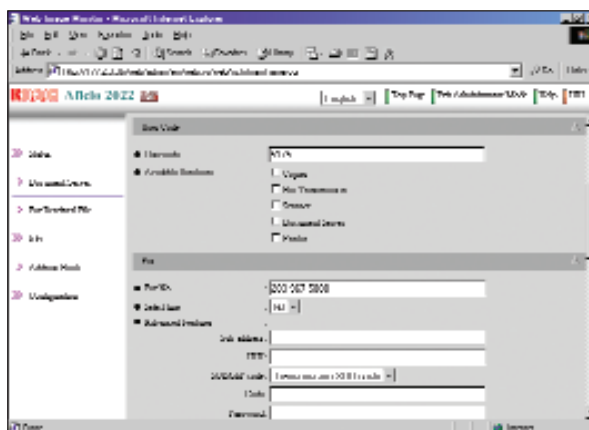
The Aficio 2022/2027 Series provide a comprehensive set of software utilities to simplify the tasks of monitoring system performance, managing network settings, as well as accessing, editing, and printing documents—no matter how they enter your workflow.

Web Image Monitor

Through Web Image Monitor, your administrator can:

- easily make or modify network and device settings
- enable passwords to control access to various functions
- update address books and fax numbers
- designate destination folders and FTP servers for network scan jobs
- monitor machine status in real-time

All right from the desktop. Your staff can use the same utility to access electronic documents stored at the device, or check consumable supplies and job queues before sending a print job. Web Image Monitor requires only a standard web browser to access your networked Aficio 2022 or 2027—no additional software is necessary.



DeskTopBinder

Finally, bring it all together with Ricoh's DeskTopBinder™ Lite software, a personal document management application that manages your scanned images, incoming faxes, and electronic files right from the desktop. You can merge files—even those created by different users in different applications—and print uniform document sets complete with finishing.



ENVIRONMENT

Your Partner in Environmental Solutions

The Energy Star®-compliant Aficio 2022/2027 Series continue Ricoh's longstanding commitment to developing office solutions with superior energy- and supply-saving features, including:

- Quick Start Up (QSU) technology
- Power-saving Sleep modes
- Duplex and Combine Copy modes
- Toner Recycling
- Low noise levels
- Minimal ozone emissions



The Versatility to Meet Your Needs ...

Engine/Copier Specifications

Configuration:	Console
Scanning Element:	Flatbed with Moving CCD Array Image Sensor
Printing Process:	Twin Laser Beam Scanning & Electrophotographic printing
Toner:	Dry, Dual Component
System Memory (std./max.):	64/192 MB RAM
Hard Disk Drive:	20 GB standard on 2022SP/2027SP
Copy Resolution:	600 x 600 dpi
Grayscale:	256 levels
Exposure Adjustment:	Manual & Automatic
Quantity Indicator:	1 to 99
Original Type:	Book/Sheet
Maximum Original Size:	Up to 11" x 17"
Copy Size:	5.5" x 8.5" to 11" x 17"
Copy Type:	Plain Paper, Transparencies, Envelopes
Warm-up Time:	15 seconds
First Copy Speed:	4.9 seconds
Continuous Copying Speed:	Aficio 2022: 22 copies/minute (LTR) Aficio 2027: 27 copies/minute (LTR)
Recovery Time:	15 seconds (from Auto Off)
Power Source:	120V/60Hz/15A
Dimensions (WxDxH):	26"(W) x 28"(H) x 24"(D)
Weight:	188 lbs.
Standard Paper Capacity:	500 sheets x 2 trays, and 100-sheet Bypass tray
Optional Paper Capacity:	500 sheets x 2 trays or 2000-sheet Large Capacity Tray (LCT)
Paper Size:	5.5" x 8.5" to 11" x 17"/A6 to A3
Paper Weight:	16 - 28 lb. Bond/60 - 105g/m ² (Tray 1) 14 - 42 lb. Bond/52 - 157g/m ² (Tray 2 and Bypass) 16 - 28 lb. Bond/60 - 105g/m ² (Duplex)
Reduction Ratios:	25%, 50%, 65%, 73%, 78%, 85%, 93%
Enlargement Ratios:	121%, 129%, 155%, 200%, 400%
Zoom:	25% to 400% in 1% increments
Standard Features:	Auto Magnification, Auto Paper Select, Auto Tray Switch, Center/Border Erase, Combine Mode, Cover Insertion, Date Stamp, Directional Magnification, 100% Duplex Productivity, Electronic/Rotate Sorting, 10 Job Programs, Negative/Positive, OHP Slip Sheet, Page Number Stamp, Paper Designate, Series Copy, Touch Screen Control Panel, 100 User Codes (optional 500 max.)
Optional Features with HDD:	Background Numbering, Booklet/Magazine Copy, Document Server (3,000 file capacity), Pre-Set and User Stamps

Printer Specifications

Print Speed:	Aficio 2022: 22 ppm Aficio 2027: 27 ppm
CPU:	RM5261A 400 MHz
Standard Interfaces:	10/100 Base TX IEEE 1284 Parallel
Optional Interfaces:	IEEE 802.11b Wireless LAN Bluetooth IEEE 1394 USB 2.0
Memory Capacity:	Shared with Copier

Network Protocol:	TCP/IP, IPX/SPX, SMB, AppleTalk
Utilities:	SmartDeviceMonitor, WebImageMonitor
Page Description Languages:	PCL 5e/6 emulation Ricoh RPCS Adobe PostScript 3 (optional)
Print Resolution:	PCL 5e/6: 300 dpi, 600 dpi PS3: 300 dpi, 600 dpi RPCS: 200 dpi, 300 dpi, 600 dpi
Grayscale:	256 Levels
Fonts for PCL 5e/6:	35 Intellifonts, 10 TrueType Fonts, 1 Bitmap
Fonts for PS3:	136 PostScript Fonts
Drivers for PCL 5e/6, RPCS:	Windows 9x, Me, NT4.0, 2000, 2003
Drivers for PS3:	Windows 9x, Me, NT4.0, 2000, 2003, Macintosh 8.6 - OS X
Standard Features:	Form Overlay, Watermarks, Spool Printing
Optional Features with HDD:	Secure Print/Locked Print, Sample Print

Scanner Specifications

Scanning Speed:	ScanRouter: 51 ipm (@ 200 dpi) TWIN Driver: 36 ipm (@ 200 dpi)
Scanning Resolution:	600 dpi
Grayscale:	256 Levels
Scan Area:	11" x 17"
Interface:	10/100 BaseTX IEEE 1394 (optional) IEEE 802.11b Wireless LAN (optional)
Protocol:	TCP/IP, SMTP Authentication, POP before SMTP Authentication, SMB, LDAP, FTP
Memory Capacity:	Shared with Copier

Fax Specifications

Circuit:	PSTN, PBX
Number of Lines:	One Maximum of two with option
Compatibility:	ITU-T (ITU) G3
Resolution:	200 x 200/100 dpi 400 x 400 dpi (Optional)
Compression Method:	MH, MR, MMR JBIG (Optional)
Scanning Speed:	0.30 seconds (LEF)
Modem Speed:	33.6 Kbps with Auto fallback
Transmission Speed:	G3: 3.0 seconds per page (without JBIG) G3: 2.0 seconds per page (with JBIG)
Memory:	4 MB standard / 28 MB maximum 320 pages / 2,240 pages
Memory Backup:	1 hour
Std Quick Dials:	500
Max Quick Dials:	2,000
Group Dials:	100 (max. 500 numbers per group)
ID Code Programming:	4 digits
User Function Key:	3 keys
Auto Document:	6 documents (18 documents with optional memory)
User Codes:	100 (500 with optional memory)
Standard Features:	Auto Document, Book Transmission, Dual Access, Duplex Reception, Image Rotation, 1 Hour Backup
Optional Features:	Simultaneous Operation of up to 2 Lines (G3 x 2), LAN-Fax Capability and Internet Faxing (T.37) with Network Scanning/Printing Installed

PS490 Paper Bank

Paper Size:	5.5" x 8.5" to 11" x 17"/A5 to A3
Paper Weight:	16 to 28 lb. Bond/60 to 105g/m ²
Paper Capacity:	2 x 500-sheets

Large Capacity Tray LCT RT500

Paper Size:	8.5" x 11"/A4
Paper Weight:	16 to 28 lb. Bond/60 to 105g/m ²
Paper Capacity:	2,000 sheets

One Bin Tray PT280

Paper Size:	5.5" x 8.5" to 11" x 17"/A5 to A3
Paper Weight:	16 to 28 lb. Bond/60 to 105g/m ²
Paper Capacity:	125 sheets

SR790 Finisher 1000

Paper Size:	5.5" x 8.5" to 11" x 17"/A6 to A3
Paper Weight:	16 to 42 lb. Bond/60 to 157g/m ²
Stack Capacity:	Proof Tray: 250 sheets Shift Tray: 1,000 sheets (8.5" x 11" or smaller) 500 sheets (8.5" x 14" or larger)
Staple Capacity:	50 sheets (8.5" x 11" or smaller) 30 sheets (8.5" x 14" or larger)
Staple Position:	3 positions (1 staple/2 positions; 2 staples/1 position)

SR820 Multi-Tray Finisher

Paper Size:	5.5" x 8.5" to 11" x 17"/A6 to A3
Paper Weight:	14 to 43 lb. Bond/52 to 163g/m ²
Stack Capacity:	500 sheets
Staple Capacity:	30 sheets (8.5" x 11" or smaller) 20 sheets (8.5" x 14" or larger)
Staple Position:	1 Position

Additional Options

DF75 ARDF (50 sheet)	JBIG/Function Upgrade Card
Platen Cover Type 1018	Handset
Type 2027 Scanner/Printer Kit	
Adobe PostScript 3	20 GB Hard Disk Drive
Type 2027 Fax	FAC20 Cabinet
Type 2027 G3 Line	Type 1027 Bridge Unit
400 dpi/SAF	

Configurations Models

Aficio 2022/Aficio 2027:	Standard 2 x 500 Paper Trays, Bypass, Interchange, Duplex, and 64MB RAM
Aficio 2022SP/Aficio 2027SP:	Standard 2 x 500 Paper Trays, Bypass, Interchange, Duplex, Printer/Scanner DIMM, 10/100 Base TX, NIC, 192MB RAM, 20GB HDD

Print speed may be affected by network, application or PC performance. Specifications and external appearances are subject to change without notice. Products are shown with optional features. For maximum performance and yield, we recommend using genuine Ricoh parts and supplies.



Image Communication
Ricoh Corporation, Five Dedrick Place, West Caldwell, NJ 07006
Phone: (973) 882-2000 • Web Site: <http://www.ricoh-usa.com>

Printed in U.S.A on recycled paper because Ricoh cares.



EPA 2000 Office Products Partner of the Year (5th consecutive year)
EPA 2000 Labeling Partner of the Year
Ricoh Corporation has determined that this product meets the Energy Star[®] guidelines for energy efficiency.



Ricoh Company, Ltd. has been granted a certificate of ISO 14000, which is the International Standard for Quality Systems.



Designed for
Microsoft
Windows 2000
Professional
Windows NT
Workstation 4.0
Windows 98



فرع فيصل: 3ش فهمي حجازي - من حسن عبد العال - متفرع من ش فيصل - أمام إدارة الهرم التعليمية
ت: 01112000561-01112000645-33935880-33935881
فرع مدينة نصر: 17ش عبد الحكيم الرفاعي - من ش عباس العقاد - أمام الحديقة الدولية
ت: 01112000539-01112000568-26721840-26721839
فرع اسكندرية: وايور المياة 25ش أحمد ذكي أبو شادي - متفرع من ش المنارة - أمام نادي مياة اسكندرية
ت: 01211644002-01211644470-01211634446-01211644005-4252158