

Xerox® 700i/770  
Digital Colour Presses



# Xerox® 700i/770 Digital Colour Presses Power, performance and value.



Hotline  
01111114194

فرع فيصل: 3ش فهمي حجازي - من حسن عبد العال - متفرع من ش فيصل - أمام إدارة الهرم التعليمية  
ت: 01112000561-01112000645-33935880-33935881  
فرع مدينة نصر: 17 ش عبد الحكيم الرفاعي - من ش عباس العقاد - امام الحديقة الدولية  
ت: 01112000539-01112000568-26721840-26721839  
فرع اسكندرية: وابور المياة 25 ش أحمد ذكي أبو شادي - متفرع من ش المنارة - أمام نادي مياة أسكندرية  
ت: 01211644002-01211644470-01211634446-01211644005-4252158

# All those looking to grow their business, take two steps forward.

**The Xerox® 700i and 770 Digital Colour Presses offer a wide spectrum of** robust capabilities that can help your business expand its creativity, productivity – and profitability – in the digital print world.

**Taking the next step into digital production printing doesn't come without first asking yourself some important questions:**

Can having more options lead to bigger and more profitable jobs from your customers? Can quality automation streamline your production time and reduce costs? Do your customers demand improved colour and image quality? How much of your business is heavyweight stock?

The Xerox® 700i and 770 Digital Colour Presses can provide all the right answers – so you can move forward with your business.

**Two superior choices from one powerful digital press family.**

The Xerox® 700i and 770 Digital Colour Presses deliver the capabilities you need to capture your share of the explosive growth in digital colour printing – outstanding image quality, excellent performance, complete versatility, effortless productivity and day-in, day-out reliability. Both are powerful performers designed with a common focus: to put superior colour, productivity and value well within your reach – so you can delight your customers and grow your business.

**Creative options and outstanding value to get your foot in the door of digital printing.**

The Xerox® 700i and 770 Digital Colour Presses are truly the newest, most flexible, small footprint, production-capable printers that make it easy to get started in digital production printing. With their speed, paper handling and inline finishing capabilities, the Xerox® 700i and 770 put a wide range of high-value applications within your reach. Best of all, they offer excellent value for your money in the short-term – and a solid return on your investment down the road. Certainly a step in the right direction as far as savings are concerned.



Xerox® 700i Digital Colour Press



Xerox® 770 Digital Colour Press

## Exciting new applications – easily finished.

The Xerox® 700i and 770's finishing options greatly expand the range of applications you can finish inline. Produce high-value applications including: face-trimmed saddle-stitched booklets, catalogues, punched documents, square-folded and trimmed manuals, tri-fold brochures and variable print postcards, direct mail, photo speciality products and more.

## Produce vibrant images with smooth sweeps that command – and hold – attention.

Our Xerox® “low melt” EA (Emulsion Aggregation) toner technology uses no fuser oil, giving all your applications a smooth offset like finish. Chemically grown, its small, consistent particles produce great quality with less toner, for smooth transitions. Advanced Xerox® colour management technology with closed-loop process controls enables vivid and consistent colour rendition.

## Accurate colour – print after print.

The Xerox® 700i and 770 Digital Colour Presses are recognised for outstanding colour quality with Fogra certification as well as being licensed by PANTONE® for spot colour matching to the PANTONE Matching System, PANTONE Goe and PANTONE PLUS.

## Run heavyweight stocks with ease.

Automatic duplexing on heavyweight stocks up to 300 gsm means more productivity and more flexibility to take on demanding jobs without manual intervention. Xerox® 700i and 770 print the same exceptional image quality across heavyweight and lighter weight stocks so you can be confident that prints look the way you want them.

## Copying and scanning increases your flexibility and productivity.

Simplified automated copying and scanning through the Duplex Automatic Document Feeder is another capability that makes the 700 family a complete printing solution. Automated duplex copying and scanning at a resolution of 600 x 600 dpi and printing at 2400 x 2400 dpi delivers great colour with ease – all at speeds up to a brisk 70 ppm. The scanner also gives you a variety of scanning options including scan-to-file PDF. It can even handle larger paper sizes up to A3, saving you the time and effort of multiple scans for a single oversize document or image.



Count on a heavyweight performer for maximum print speed for all media weights.

**As you move into higher monthly print volumes and heavier weighted paper stocks, the Xerox® 770 Digital Colour Press can move with you.** Automated duplexing of stocks up to 300 gsm expands your creativity without slowing your productivity. Do more great work faster, leveraging maximum print speed with excellent print quality.



### Colour it “smart.”

At the heart of the Xerox® 770 and our image quality enhancements tool is the inline spectrophotometer. It's truly the workhorse of the Xerox® 770, enhancing the power of our ACQS colour management tools to improve colour stability, accuracy and repeatability. And with the spectrophotometer placed strategically within the paper path, automated processes like colour calibration and destination profiling work seamlessly while streamlining workflow, boosting your productivity – and improving your bottom line.

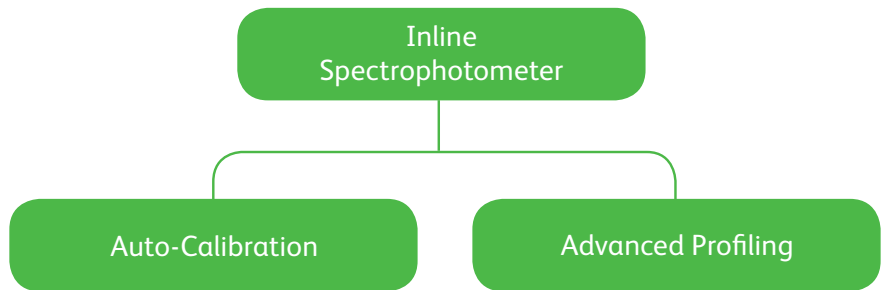
### Automated calibration delivers consistent colour.

Reduce time-consuming manual colour maintenance tasks and make them operator-initiated functions delivering exceptional image quality consistently. By generating the colour patches on the target media and automating the spectral readings we reduce idle printer time and deliver consistent colour on every page and on every job. By streamlining calibration tasks, we help reduce non-productive printer time and facilitate quick, on-time job turnaround.

### Transform more time into production.

The Xerox® 770 features Automated Colour Quality Suite (ACQS) with its inline spectrophotometer that lets you be more productive, increase quality and consistency – and become an indispensable partner to your customers. It's designed with built-in process automation to deliver colour accuracy and repeatability from job to job, operator to operator or across multiple devices quickly and easily while increasing productivity and available press time.

### Automated Colour Quality Suite (ACQS)



### Advanced Destination Profiling – all at the touch of a button.

Colour critical applications such as direct mail campaigns, photos and more can require a high degree of colour accuracy and detail to create a pleasing appearance. The Xerox® 770's Advanced Destination Profiling capability allows you to automatically create a superior, custom ICC-Compliant

Destination Profile while mapping RGB and CMYK source images to a desired press-like output. Emulate source colour spaces and produce more accurate colour. Advanced Destination Profiling can also render to industry colour standards, such as Fogra and GRACoL. The result? Faster and easier customer approvals which help you turn jobs around quickly.

# Everything you need to do a quality job.

**A surprising host of options and unsurpassed versatility at an equally surprising price point.** Whether you're new to digital colour or upgrading your current capabilities, the Xerox® 700 Digital Colour Press family has features that enable you to say yes to more and more of your customers' most demanding jobs.

Take a closer look inside and out, and you'll see how the Xerox® 700 family is built to give you reliable performance, exceptional media handling and customer-pleasing quality start to finish.



1

**User Interface:** Easier to use, offering greater flexibility, while providing more operator information and control over critical issues such as alignment and registration. It lets you create and store custom paper profiles for repeated use.

2

**Document Handler:** Holds up to A3 originals; Duplex Automatic Document Feeder (DADF) reliably scans two-sided originals automatically.

3

**Oversized High-Capacity Feeder:** For larger stocks, choose one or two robust production paper trays each holding 2,000 sheets of coated or uncoated media.

Reliable paper movement prevents misfeeds. This production-class feeder has four blowers, an advanced roller system, and a centre registration system (shown).

**High-Capacity Feeder:** Optional high-capacity feeder holds up to 2,000 sheets of paper (not shown).

4

**Front to Back Registration:** Contact Image Sensor provides adjustments to deliver  $\pm 1$  mm front to back registration.

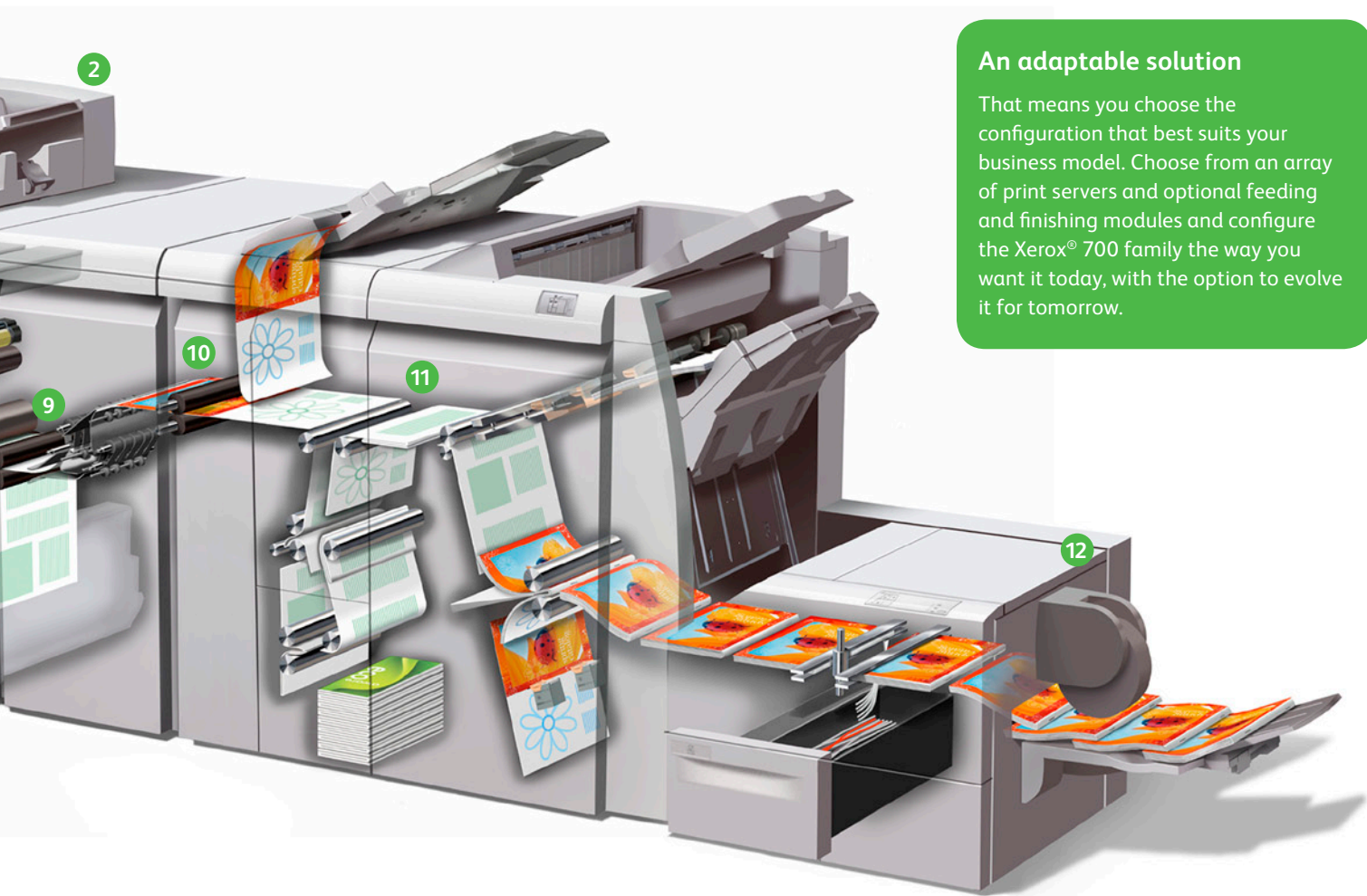
5

**Load-While-Run Toner:** Provides longer print runs and enhanced productivity. Two black toner SMart Kit® replaceable units keep replenishment intervention to a minimum and productivity to a maximum.

Smart Kit replaceable units for toner, drum rolls, fuser and waste toner bottle raise uptime to all-time highs.

6

**Image Quality:** 2400 x 2400 dpi resolution. The self-cleaning Corotron assembly offers improved productivity and image quality.



**An adaptable solution**

That means you choose the configuration that best suits your business model. Choose from an array of print servers and optional feeding and finishing modules and configure the Xerox® 700 family the way you want it today, with the option to evolve it for tomorrow.

**7**  
**Paper Path:** Straight, simple paper path increases reliability.

**8**  
**Three Standard Paper Trays:** Along with the bypass tray, holds 1,900 sheets of paper.

**9**  
**Smart Decurler Module:** You get outstanding productivity in your finishing equipment because this robust post-fuser decurler with two rollers and bars ensures that sheets are flat. The “smart” decurler built into the paper path takes into consideration the side, the toner coverage and the humidity and applies the most appropriate pressure to ensure the flattest output.

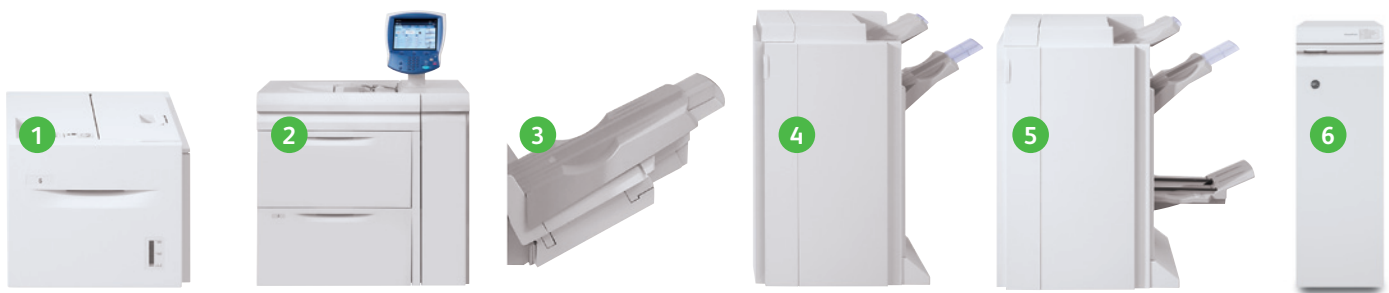
**10**  
**Inline Spectrophotometer\*:** Automated Calibration and Destination Profiling deliver colour accuracy and repeatability from job to job.

**11**  
**Optional Finishers:** Produce more revenue generating applications including coated paper inline with a suite of optional finishers.  
**Xerox® 700i** – Offset Catch Tray, Advanced Finisher, Professional Finisher, Light Production Finisher with optional folder, Light Production Finisher with Booklet Maker and optional folder, SquareFold® Trim Module, GBC AdvancedPunch and High-Capacity Stacker.  
**Xerox® 770** – Light Production Finisher with optional folder, Light Production Finisher with Booklet Maker and optional folder, SquareFold® Trim Module, GBC AdvancedPunch and High-Capacity Stacker.

**12**  
**SquareFold® Trimmer Module:** Attach Light Production Finisher with Booklet Maker for greater versatility and enhanced output. This optional module enables face trimming and square folding for higher quality booklets and brochures.

# Professional feeding and finishing are the keys to the perfect job.

**Versatility from start to finish.** The Xerox® 700i and 770 Digital Colour Presses give you all the options you need to make anything from coated brochures, newsletters, presentations, direct mail, booklets and more... a great success.



1

**High-Capacity Feeder.** Holds up to 2,000 sheets in a wide range of weights.

2

**Oversized High-Capacity Feeder.** Adds capacity as well as two additional media selection points for large and heavyweight media and high-value applications.

3

**Offset Catch Tray\*.** 500 sheet stacking.

4

**Advanced Finisher\*.** Ideal for basic binders, manuals, reports and presentations. This finishing option offers 50 sheet, multi-position stapling and 2, 3 or 4 hole punching.

5

**Professional Finisher\*.** The choice for uncoated, high-page-count booklets, manuals, etc. In addition to the features of the Advanced Finisher, this finisher includes saddle stitching with centre fold for easy booklet making for up to a 60-page booklet and bi-fold brochure assembly.

\* Only available on the Xerox® 700i.

## A Spectrum of Choices



Xerox® 700i Digital Colour Press



Xerox® 700i Digital Colour Press



Xerox® 770 Digital Colour Press

As your customers' needs expand, the Xerox® 700i and 770 Digital Colour Press can grow too, with configurations that add application flexibility and enhanced productivity to help you achieve your objectives.



# Expand your capabilities as you grow your business.



6

**GBC AdvancedPunch.** Lets you create professionally bound documents in-house by combining printing, punching and collating into one convenient step.

7

**Light Production Finisher.\*\*** This finishing module enables coated booklets, brochures and bi-fold mailers as well as stacking, stapling and hole punching. It also includes an interposer input tray. Even more versatility can be obtained with the addition of the optional tri-fold, Z-fold and A3 Z-fold module for this finisher.



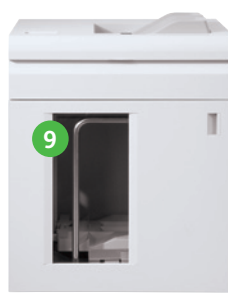
8

**Xerox® SquareFold® Trimmer Module.** Enhances the power of the Light Production C Finisher with booklet maker with highly desired features, such as square fold of cover sheets and face trimming to produce booklets.

9

**High-Capacity Stacker.\*\*** 5,000 sheet stacking for long production runs.

\*\* Interface module required.



Sort and Collate

Hole Punch

Stapling

Booklet

Folding

Tri-Fold

Z-Fold

A3 Z-Fold

Face Trim

Square Fold

Adding the perfect finish to any creative idea is easy with a wide variety of options.

# Choose a print server that's a perfect fit for your workflow needs.

**You get more choices, more capabilities.** These powerful servers put a variety of colour tools, workflow capabilities, processing speed and sophisticated colour management controls at your fingertips.

## Colour Workflow Software

Each server is designed to meet a specific set of workflow and application requirements. Your Xerox representative will help you choose the one that best suits your needs.



Xerox® FreeFlow® Print Server  
Version 8



Xerox® EX Print Server,  
Powered by Fieri®



Xerox® CX Print Server,  
Powered by Creo®



Xerox® Integrated Fieri®  
Colour Server

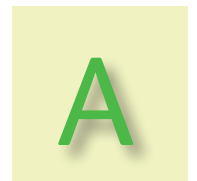
## Adobe® PDF Print Engine (APPE)

Supported by the Xerox FreeFlow®, Xerox CX and Xerox EX Print Servers.

Before



After



Transparency handling

Before



After



Spot colour callouts

The Adobe PDF Print Engine – or APPE – is the gold standard in PDF processing, producing PDF files that flow through your shop with a minimum of intervention. No more transparency problems. No more colour matching challenges. Instead, you will see faster turnarounds. More accurate results – and more returning customers.

Xerox 700i and 770 Digital Colour Product Features	700i	770
<b>Colour Critical Applications</b>		
Fogra Certified	•	•
PANTONE Spot Colour Accuracy, Certified	•	•
Automated Colour Profiling (ACQS)		•
Automated Calibration (ACQS)		•
<b>Media Productivity</b>		
300 gsm automatic duplex	•	•
All media weights rated speeds		•
<b>Digital Workflow Support</b>		
Adobe PDF Print Engine	•	•
Advanced RIP/Controller Technology	•	•
Variable Finishing Subset Application support	•	•
<b>Digital Front Ends</b>		
Xerox® Integrated Fiery® Colour Server	•	
Xerox® CX Print Server, Powered by Creo®	•	
Xerox® FreeFlow® Print Server	•	•
Xerox® EX Print Server, Powered by Fiery®	•	•
<b>Finisher/Stacker</b>		
Light Production Finisher	•	•
Light Production Finisher with Booklet Maker	•	•
Offset Catch Tray	•	
Advanced Finisher	•	
Professional Finisher	•	
High-Capacity Stacker	•	•
GBC AdvancedPunch	•	•
SquareFold® Trimmer	•	•

**Production printing at an affordable price. A winning business proposition.**

Now you can have it all – image quality, ease of use, productivity, media latitude, feeding and finishing options, and world-class workflow solutions – at a truly affordable price. Want to capture your share of the growth in digital colour printing? Want to reduce your costs while expanding your digital colour printing business? Then the Xerox® 700i and 770 Digital Colour Presses offer the answers you’ve been seeking.



# Xerox® 700i/770 Digital Colour Presses Specifications

## Resolution

- Print/Copy: 2400 x 2400 dpi  
Scan: 200 x 200, 300 x 300, 400 x 400, 600 x 600
- Line Screens: 600, 300, 200 and 150 Clustered Dot, 200 Rotated Line Screen\*

## Technology

- Automatic Colour Quality Suite (ACQS) (Xerox® 770 configurations only)
- Load-while-run capability
- Advanced Registration Technology for tighter control
- Custom paper set-up/Alignment profiles
- Xerox® EA low melt toner
- Smart Kit® replaceable units for toners, drums, fuser, charge corotron, waste bottle, staples
- Active decurling for heavy-weight media

## Selected Colour/Graphic Arts Credentials

- Fogra certification, PANTONE® Matching System, PANTONE Goe™, PANTONE PLUS, Adobe PDF Print Engine\*

## Integrated Scanner

- 250-sheet capacity
- 50 ppm colour/80 ppm black and white
- Originals up to A3 in weights from 38 gsm to 200 gsm
- Duplex Automatic Document Feeder (DADF)

## Productivity/Print Speeds

### Xerox® 700i

- Duty Cycle: 300,000
- A4
  - 71 ppm (64 – 176 gsm uncoated)
  - 51 ppm (177-256 gsm uncoated) (106-176 gsm coated)
  - 35 ppm (257-300 gsm uncoated) (177-300 gsm coated)
- A3
  - 35 ppm (64-176 gsm uncoated)
  - 25 ppm (177-256 gsm uncoated) (106-176 gsm coated)
  - 17 ppm (257-300 gsm uncoated) (177-300 gsm coated)
- SRA3
  - 31 ppm (64-176 gsm uncoated)
  - 22 ppm (177-256 gsm uncoated) (106-176 gsm coated)
  - 15 ppm (257-300 gsm uncoated) (177-300 gsm coated)

### Xerox® 770

- Duty Cycle: 450,000
- A4 70 ppm (64-300 gsm)
- A3 35 ppm (64-300 gsm)
- SRA3 31 ppm (64-300 gsm)

## Paper Flexibility/Weights

- Internal Trays 1-3: 550 sheets each, 64-220 gsm uncoated; 106-220 gsm coated
- Bypass Tray: 250 sheets, 64-300 gsm uncoated; 106-300 gsm coated
- Coated, heavyweight, transparencies, DocuMagnet, labels, tabs; all trays run coated stock

## Paper Format/Sizes

- Maximum sheet size all trays: SRA3/330 x 488 mm
- Maximum print image area: 323 x 480 mm
- Maximum copy image area: 297 x 432 mm
- Minimum paper size trays 1-3: 140 x 182 mm
- Minimum paper size bypass: 100 x 148 mm
- Minimum paper size OHCF: B5/176 x 250 mm

## Paper Capacity and Handling

- 1,900 sheets up to SRA3 standard via three internal trays and bypass tray
- Maximum paper capacity: 5,900 sheets SRA3 via standard trays and two Oversized High-Capacity Feeders (optional)
- Two-sided printing: Automatic up to 300 gsm coated and uncoated

## Options

- High-Capacity Feeder
  - A4
  - 2,000 sheets up to 220 gsm
- Oversized High-Capacity Feeder
  - 64-300 gsm uncoated
  - 106-300 gsm coated
  - 182 x 250 mm/ B5 to SRA3/330 x 488 mm
  - Auto duplex up to 300 gsm coated and uncoated
  - One or two Tray Module: 2,000 sheets or 4,000 sheets
- Offset Catch Tray\*\*
  - 500-sheet stacking
- Advanced Finisher\*\*
  - 500-sheet top tray
  - 3,000-sheet stacker tray
  - Multi-position stapling, coated and uncoated paper, up to 50 sheets
  - Hole punching
- Professional Finisher\*\*
  - 500-sheet top tray
  - 1,500-sheet stacker tray

- Stapling, coated and uncoated, up to 50 sheets
- Hole punching
- Bi-fold, saddle stitch booklet maker up to 15 uncoated sheets
- GBC AdvancedPunch
  - Punch configurations available in A4
- Light Production Finisher
  - 500-sheet top tray
  - 3,000-sheet stacker tray
  - Multi-position hole punching and stapling
  - Stapling, coated and uncoated, up to 100 sheets
  - 200-sheet interposer for pre-printed and full bleed sheets
  - Optional Folding Module for tri-fold and Z-fold (A4 and A3)
- Light Production Finisher with Booklet Maker
  - All features of Light Production Finisher
  - Coated/uncoated booklet bi-fold or saddle-stitched booklets
  - Up to 25 sheet (100-page booklet)
- SquareFold® Trimmer Module
  - Square fold up to 25 sheets
  - Face trim between 2-20 mm in 0.1 mm increments
  - Paper weights 64-300 gsm coated and uncoated
- High-Capacity Stacker
  - 500-sheet top tray
  - 102 x 142 mm to SRA3
  - 5,000-sheet main tray
  - 182 x 257 mm to SRA3
- Convenience Stapler\*\*
  - Staple up to 50 sheets of 90 gsm
- Foreign Interface Kit\*\*
  - The Foreign Interface Kit enables the connection of external devices such as auditrons or coin-op devices. This will perform in copy and print modes.

## Choice of Print Servers

- Xerox® FreeFlow® Print Server
- Xerox® CX Print Server, Powered by Creo®\*\*
- Xerox® EX Print Server, Powered by Fiery®
- Xerox® Integrated Fiery® Colour Server\*\*

## Electrical

- Printer: 200-240 VAC/50/60 Hz
- Options: 100-240 VAC 50/60 Hz

## Printer Dimensions

- Height: 1,372 mm
- Width: 1,714 mm
- Depth: 777 mm

\* Depending on print server

\*\*Only available for 700i

[www.xerox.com](http://www.xerox.com)



©2011 Xerox Corporation. All Rights Reserved. XEROX®, XEROX and Design®, FreeFlow®, Smart Kit® and SquareFold® are trademarks of Xerox Corporation in the United States and/or other countries. 10/11 X77BR-01EA



فرع فيصل: 3 ش فهمي حجازي - من حسن عبد العال - متفرع من ش فيصل - أمام إدارة الهرم التعليمية  
ت: 01112000561-01112000645-33935880-33935881  
فرع مدينة نصر: 17 ش عبد الحكيم الرفاعي - من ش عباس العقاد - أمام الحديقة الدولية  
ت: 01112000539-01112000568-26721840-26721839  
فرع اسكندرية: وابور المياة 25 ش أحمد ذكي أبو شادي - متفرع من ش المنارة - أمام نادي مياة أسكندرية  
ت: 01211644002-01211644470-01211634446-01211644005-4252158