

RISO HC5500 & Controller Specifications

● Main Body (equipped with Auto Control Stacking Tray II)

RISO HC5500	Print Type	Line Type Ink Jet System	
	Resolution	Normal: 600dpi or equivalent Fine: 900dpi or equivalent (Line Smoothing: ON)	
	Print Head	Piezo type, Physical Resolution 300dpi, 8 Gradation	
	Ink	Oil-based pigment type, Cyan/Magenta/Yellow/Black, 1,000ml for each	
	Print Speed^{(*)1}	120ppm, Duplex 96ppm (A4, Landscape, Normal mode)	
	Duplex Printing	Standard	
	Printer Collate	Standard	
	Paper Size	Paper Feed Tray: Max. A3 (297mm x 432mm) / Ledger Min. 182mm x 182mm Standard Paper Feed Tray: Max. 340mm x 550mm Min. 90mm x 148mm	
	Paper Weight	Paper Feed Tray: 52g/m ² to 104g/m ² paper Standard Paper Feed Tray: 46g/m ² to 210g/m ² paper	
	Printable Area	Max. 314mm x 458mm (margin width of 1mm)	
	Guaranteed Print Area^{(*)2}	Min. 80mm x 138mm (margin width of 5mm) Max. 306mm x 450mm (margin width of 5mm)	
	Feed Tray Capacity^{(*)1}	Paper Feed Tray 1: 1,000 sheets, Paper Feed Tray 2: 500 sheets, Standard Paper Feed Tray: 1,000 sheets	
	Paper Receiving Tray Capacity	1,000 sheets	
	RISO Extended Print Function	Proof copy (set in the driver) / test print (printer) / print position adjustment (20mm in vertical and horizontal directions / adjustable in temporary data in printer) / additional print (temporary data retrieve)	
	Printer Memory	640MB	
	Power Source	100-240V~, 50/60Hz, 12.0-6.0A or more	
	Power Consumption	Maximum: 800W or less, Ready ^{(*)3} : 300W or less, Stand-by: 150W or less, Sleep mode: 20W or less	
Operating Noise	Operating: 68dB or less		
Operating Environment	Temperature: 15°C - 30°C (59°F to 86°F), Humidity: 40% - 70% (no dew condensation)		
Mass	Approximately 266kg (including stand) ^{(*)4}		
Dimensions (WxDxH)	In use: 1,800mm x 695mm x 1,135mm Paper Receiving Tray and Standard Feed Tray folded: 1,220mm x 695mm x 1,135mm		
Controller	RISO Controller HC3R-5000	RISO Controller PS7R-9000	
Printer that can be connected	RISO HC5500T		
CPU	Intel® Celeron® 2.9GHz	Intel® Pentium® 4 3.4GHz	
Memory Capacity	256MB	1024MB	
HDD	80GB (user available area: 70GB) User available area: Job receiving area, Storage area	160GB (user available area: 150GB) User available area: Job receiving area, Storage and Form storage, Font installation area	
OS	Linux		
Interface	Ethernet / 1000Base-T, 100Base-TX, 10Base-T		
Type	Outside unit type		
Power supply / maximum power consumption	100-240V~, 50/60Hz, 2.5-1.8A or more Maximum: 300W		
Dimensions / mass (WxDxH)	180mm x 405mm x 359mm / approximately 10kg		
PDL (page description language)	Original PPL	Adobe® Postscript® 3™	
Applicable protocol	TCP/IP	TCP/IP, Apple Talk®	
Installed font	-	139 fonts	
Font download	-	(by installer supplied with font)	
Applicable OS	Windows® 2000 (SP2 or later) / XP (SP1 or later)	Windows® 2000 (SP2 or later) / XP (SP1 or later) MacOS® 9 (9.2.2), MacOS® X (10.2.6 or later)	
Colour Management	*ComColor™ Standard* colour management is provided. *Auto colour matching function based on output setting and paper setting.		
Pagination	Multi-up (single page) / Multi-up (multi-page) / Booklet / Poster	Multi-up (single page) / Multi-up (multi-page) / Booklet / Fold	
Image Processing	Gamma control: Contrast / Brightness / Chromaticness Line Smoothing, Screening: Error diffusion / Dot screen	Gamma control: Contrast / Density Line Smoothing Screening: Error diffusion / Dot screen	
Image Position Adjustment	Image position can be adjusted in the vertical and horizontal directions from -20mm to +20mm on both the front and back sides.		
Form Function	-	Registration of form, Overlay Function	
Paper Feed / Ejection Processing	Auto tray selection, Duplex printing, Job separation, Printer collate, Support of HC Finisher (optional), Output face setting		
Clustering	-	Job delegation (up to 4 units of controllers can be registered) Job split (Job split limit: Number of pages / Output volume)	
Sample page print	Configuration, Sample image	Configuration, Sample image, PS font list	
Security print	Security code setting, Job name display setting		
Monitoring Function	Engine status display, Remaining volume display, Paper information display		
Job Manager Function	Job status display Job storage management Scan and Storage management	Job status display, Job storage management, Archive management, Form management, Scan and Storage management	
User Function	Account record display		
Administrator Function	Network setting, Security setting, Direct output setting, Storage folder setting, Initial Setting	Account record display, Storage of history (monthly / daily) Network setting, Security setting, Font download, Direct output setting, Storage folder setting, Paper size entry, Initial Setting	
Applicable Browser	Windows®: Internet Explorer Ver. 6.0 SP1 or later / J2SE1.4.2 or later	Windows®: Internet Explorer Ver. 6.0 SP1 or later / J2SE1.4.2 or later MacOS® 9: Internet Explorer Ver. 5.1.6 for Mac or later / MRJ2.2.6 or later MacOS® X: Internet Explorer Ver. 5.2.3 for Mac or later / J2SE1.4.1 or later	

*1: For A4 / 85g/m².
*2: When printing onto an envelope, a margin of 10mm width is made.
*3: The printer is in the print mode but is not printing (at 20°C).
*4: Consumables and controller are not included.

Specifications are subject to change without notice.
Details may vary depending on the region.

RISO logo is the registered trademark of Riso Kagaku Corporation.
ComColor and FORCEJET are trademarks of Riso Kagaku Corporation.



RISO KAGAKU CORPORATION
5-34-7 Shiba, Minato-ku, Tokyo 108-8385 Japan
Phone: +81-(0)3-5441-6661 Fax: +81-(0)3-5441-6668
<http://www.riso.com/>



120ppm full-colour printing
at incredibly low cost

HC5500



The speed and power to entirely change the face of office printing

HC5500

HC5500 is the world's fastest*² office-use colour printer, printing colour documents at speeds of 120ppm*¹. The printer produces highly attractive full colour copies at incredibly high speeds. Let HC5500 drive your business expansion. HC5500 comes loaded with the multiple functions demanded in today's office environment. It has a scan function for colour copying and digitizing documents. It is equipped with security functions created for shared printing on networks. The integrated print functionality lets you internally create sales promotion materials. It's multi-function finisher provides the perfect sorting solution for diverse departments by integrating offset stacker*³, stapler, and center binding functions. With its powerful speed, efficient print job processing, and easily-managed functions, the HC5500 is truly an office workhorse. Try the HC5500 today and see for yourself the new speed that it brings to your world.



HC5500



Full Colour Inkjet Printer

Ultra-high-speed 120ppm output*¹

500 sheets can be printed in about 4 minutes. The world's fastest*² full colour printer.

Lowest Running Cost Per Page

Full colour, and economical. Colour on a black and white budget. A high volume tool that is economical at low volumes too.

Full security

Print with the protection of a security code. Complete security created with network printing in mind.

Colour copying

Transform HC5500 into a colour copier by attaching a dedicated colour scanner*³. Of course, two-sided copying is also possible.

Automatic finishing

A multiple-function finisher*³ automates post-printing work such as stapling, punching holes, and folding.

PostScript® models available

Choose from a PS model built for the DTP environment, and an HG model with even higher specifications.



What is ComColor™?

RISO's trademark "ComColor™" is a synthesis of Communication and Colour.

- ComColor™ is a new type of printer that satisfies the need for "practical, fast and on demand" printing for business, as well as for daily life.

The HC5500 will ensure you never have to worry about the high cost and slow printing speed that usually is associated with colour printing.

*¹ For A4 size, long-edge feed, simplex, continuous printing in standard mode.

*² A4 long edge feed, simplex, continuous printing in standard mode. Based on office colour printers using cut sheet paper commercially available as of October 2005 (Source: RISO data).

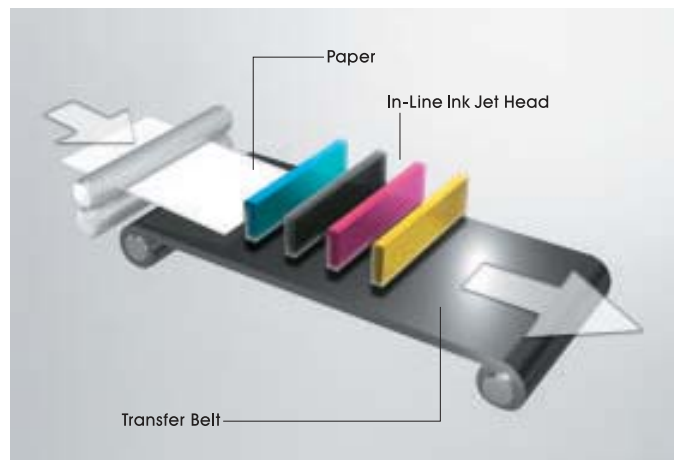
*³ The colour scanner and finisher system are optional.

The world's fastest full-colour office printer

HC5500

High-speed, high-volume performance to meet all your printing needs

ENGINE TECHNOLOGY
FORCEJET™



In-line system delivers high speed output

Based on high-performance ink jet technology used in commercial applications, HC5500 is equipped with "FORCEJET™" high speed print technology developed for office printers. The technology consists of four colour 316mm wide In-line ink jet heads arranged in parallel, capable of printing onto short-edge A3 width paper with a single pass. Cyan, black, magenta and then yellow ink droplets are rapidly sprayed onto paper

passing beneath the print heads. Combining high-speed printing functionality with a rapid and stable paper supply, the printer attains print speeds of 120ppm*, the fastest in the world.

*For A4 size, long-edge feed, simplex, continuous printing in standard mode. Based on office colour printers using cut sheet commercially available as of October 2005 (Source: RISO data).

World's fastest at 120ppm

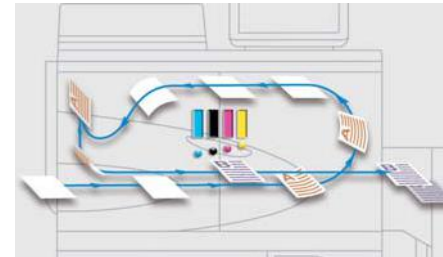
No other sheet-fed ink jet printer can print as fast as the HC5500 at 120 pages per minute in full color, the HC5500's print speed can't be beat by any other ink jet printer.

Compared to high speed colour MFP (50 sheets/min) and high speed colour laser printer (30 sheets/min.) during full colour output in standard mode using A4 size paper, simplex, long-edge feed.

Duplex printing as standard

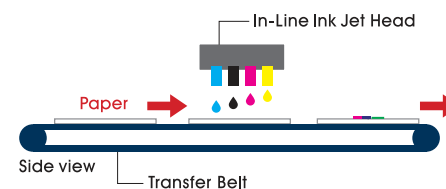
Once the front side has been printed, the sheet of paper is automatically reversed using a switch-back method paper feed and stack-less paper throughput mechanism to alternately print the front and back in a highly efficient manner. This technology allows rapid duplex printing at 96 ppm (48 sheets)* to dramatically improve printing productivity.

*For A4 size, long-edge feed, printing in standard mode.



Straight paper path for stable feed

The printer uses a straight path feeding system to horizontally feed paper into the machine. This method allows high-speed printing with minimal print offset. The printer's "FORCEJET™" technology provides optimal control of the paper feed speed to match the amount of ink being sprayed from the ink heads. A sensor to detect double feeds also helps to minimize problems such as paper jams.



Large-capacity paper feed tray

By loading the same size paper into the upper/lower 2-level front and standard paper feed trays, over 2,500 sheets can be fed into the printer*. The front paper feed tray can also be refilled when the standard paper feed tray is in use, allowing a large volume of paper to be continuously fed without having to halt the print job. And of course different paper sizes can be set in the front and standard paper feed trays respectively.

* For 85g/m² paper.

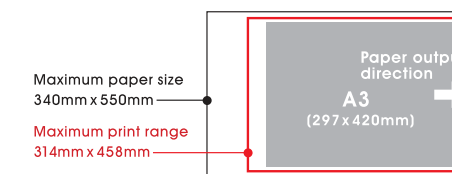


A3 Full Size Printing Made Possible

The HC5500 printer can print paper sizes ranging up to 340mm x 550mm*¹. The maximum print area exceeds A3 size at 314mm x 458mm*². If a registry guide is added to an A3W (wide) paper, an A3 complete print with offset is possible.

*¹ When a paper feed tray is used.

*² Depending on the application being used, printing at this size may not be possible.



Print Onto Card Stock and Envelopes Too

The HC5500 printer offers a wide range of options with its ability to print on card stock used in postcards (up to 210g/m²) and commercially available envelopes*. The paper feed tray can be set at an incline (one level), allowing the envelopes to be smoothly fed during printing.

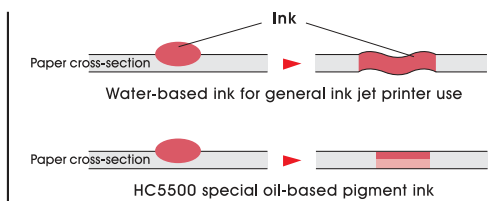
* The paper feed tray is used when printing envelopes. Only simplex printing is possible. It may not be possible to print some types of envelopes.

* Please contact a sales representative for further details.

Special Ink for High Speed Printing

An oil-based pigment ink was developed exclusively for the HC5500 printer. The ink's quick-drying characteristics prevents it from staining the back side of the printed paper, prevents the paper from rippling, and allows high speed duplex inkjet printing at speeds that would have been impossible in the past. Duplex printing reduces the volume of paper being used and can reduce office printing costs. The ink is also resistant to light radiation and water. It's the perfect quality ink for business applications that demand resistance to fading and moisture.*

* Differs depending on paper type and usage environment.



Optimal Control of Ink Amount

The "FORCEJET™" engine achieves extremely fine gradations by controlling the ink drop amount so that up to 8 gradations can be achieved in a single colour dot.

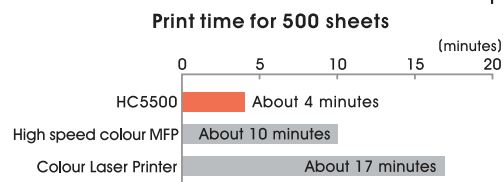
ComColor™ Standard: Reducing the cost of Full Colour Printing

The amount of cyan, magenta, yellow and black ink used is controlled to take into account the original and paper type. The unique ComColor™ Standard colour profile allows output at an image quality appropriate to the image to reduce ink consumption.

High-volume ink cartridges

Each high-volume colour ink cartridge holds 1,000ml. The printer's ink cartridges let you make over 64,000 copies* without replacing cartridges. The one-colour-per-cartridge system also lets you replace only the colour that has been used up, and helps to reduce consumable waste.

*A4 size single side, RISO colour standard original, continuous printing in standard mode.



Outstanding versatility and ease of operation

HC5500

HC5500 makes it easy to accomplish the widest variety of printing jobs

A3 duplex Colour Scanner

When the optional colour scanner and the specified touch panel display are connected, you can use the HC5500 as a colour copier. The HC5500 pure colour scanner and the RISO scanner HS2000 can output high speed scans at 20 ppm*. Equipped standard with a duplex auto feeder, dual side copies can also be handled at a high speed. The image is scanned at ultra high density at an optical resolution of 600dpi, allowing even small text to be clearly reproduced.
*When the AF (Auto Feeder) is used.



Standard Duplex Scanning

The RISO scanner HS2000 comes standard-equipped with a duplex auto feeder that holds up to 100* originals, allowing you to quickly scan multiple pages. Combined with the HC5500 high speed printing, you no longer need to wait for dual-sided colour copies.
*Under B4 size (80g/m²).

A Simple 15 inch LCD Touch Panel for Enhanced Feature Operation

A bright and easy-to-see 15-inch colour LCD display is used for the HC5500 touch panel. The operation screen is laid out in a simple configuration. Operations are simple, and you can easily adjust scanned images and security print settings. The angle of the monitor neck can also be easily adjusted to match the way it is being used as well as the environment in which it is installed.
*The touch panel display is required to use the scan function.

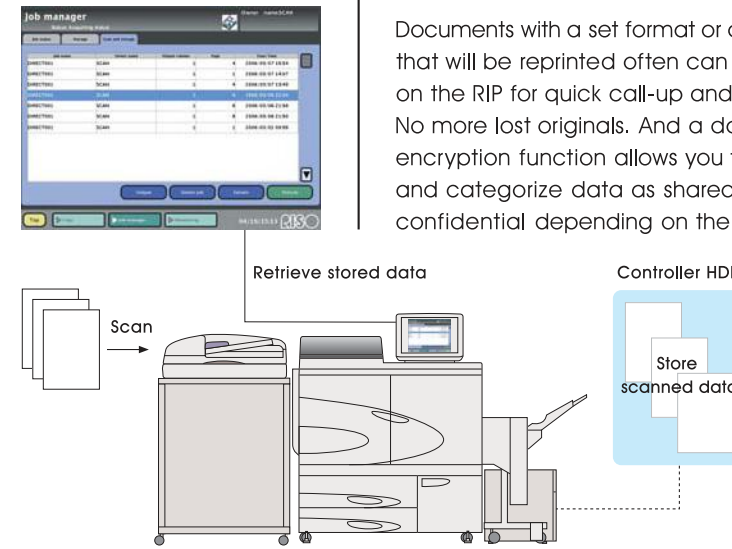


Easy Image Adjustment from the Touch Panel

After scanning an original, you can adjust the image and print settings from the touch panel. The line and photo modes improve the reproduction of originals that have both text and photos. Use the multiple setting functions like character recognition of originals with mixed text and photos, moire elimination, and base colour levels to create easy-to-read and beautiful colour copies.

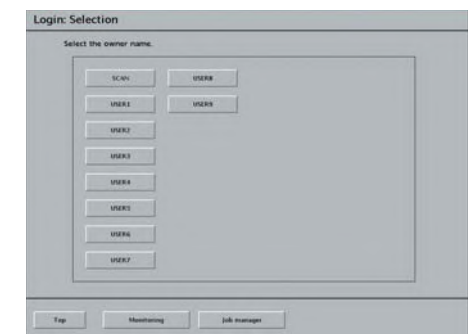
Use the integrated storage functions Quickly Retrieve Data as Needed

Documents with a set format or documents that will be reprinted often can be stored on the RIP for quick call-up and printing. No more lost originals. And a data encryption function allows you to encrypt and categorize data as shared or confidential depending on the content.



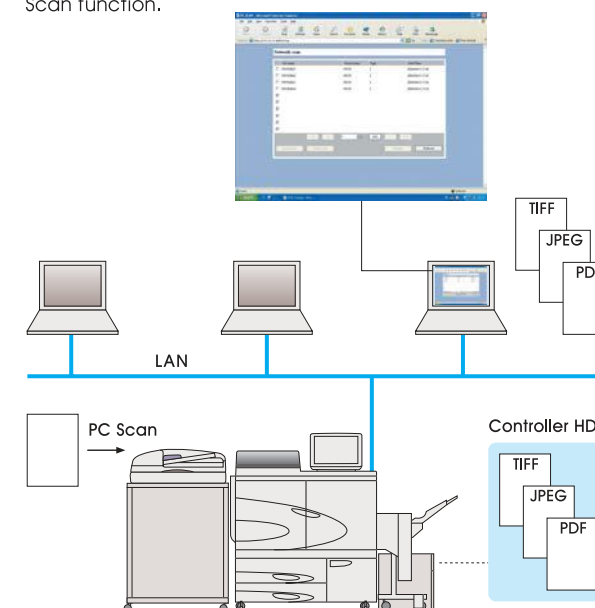
Manage Printing by Individual and Department

Use the owner login function to register up to 30 owner names and classify and manage scan data by individual or department. A password can be assigned to each owner for added security.



Use PC Scan and Send Scanned Data to another Computer

Send scanned data to networked computers in PDF, JPEG and TIFF formats. The data is initially saved to the HC5500 controller. Use the desktop computer's web browser to download scanned and saved data from a list.
*Contact a sales representative for details regarding the models compatible with the PC Scan function.



Digitizing documents

Use the PC Scan function to digitize documents by scanning multiple documents for output into a single PDF file. Use this function to increase the efficiency of office file management.



Add Security Settings

Require input of a security code to open data saved during a PC scan operation. This function allows you to secure important data. Data management can also be facilitated by inputting a job and owner name.



PC Scan Data Automatic Delete Function

Use the PC Scan function to specify the time period for which scanned data is saved. Once set, scanned data will be automatically deleted once the specified time period elapses.



Security plus the convenience of remote operation

HC5500

HC5500 keeps confidential documents away from prying eyes

Data leak prevention function using SSL*1 (encrypted communication)

During IPP*2 output, data being sent to HC5500 is encrypted using SSL encryption. This prevents the reading of print data by unauthorized access from an external source.

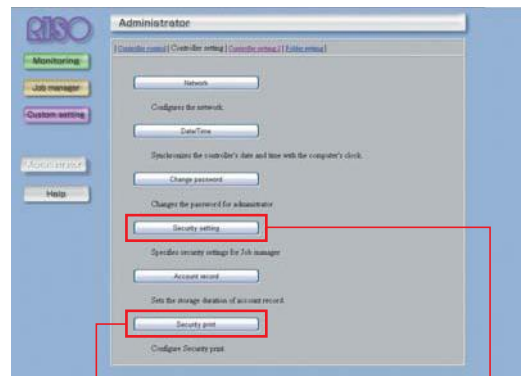
*1 Secure Socket Layer.
*2 Internet Printing Protocol.

Security Printing Function for Printing at a High Security Level

When a printer is shared on a network, there is a danger that a sensitive document you print could get mixed up with another person's print job, causing an unauthorized individual to see your confidential document. HC5500 is built with a security print function, allowing you to print with high confidentiality.

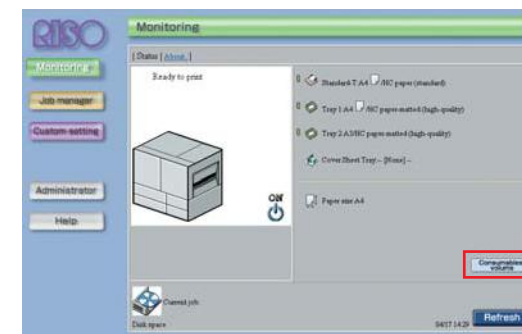
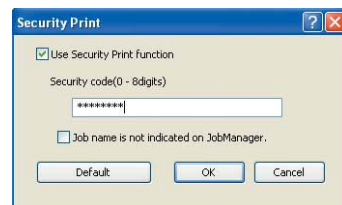
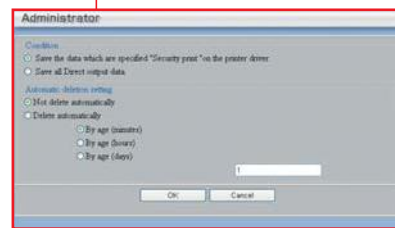
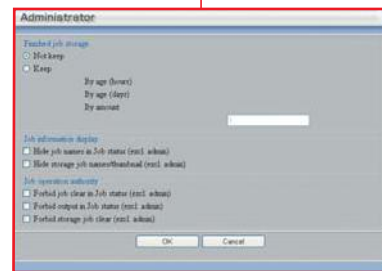
Security Printing Using Security Code Input

You can set a security code for data that is being printed. That data is saved as "Pending", and by inputting a security code into the HC5500 touch panel, that print job will be printed out first. This prevents the printout from being viewed and taken away by other people while the sensitive job is being printed. In addition, this function can also help reduce the instances of printouts being left on the printer.



The Printer Administrator can Make Security Settings

The security level of finished and queued jobs can be set on the administrator screen to match print usage conditions. The administrator can also choose to purge print data from the printer's memory, allowing confidential documents to remain confidential.



Managing HC5500 Operations with a Computer Browser

A "Web Console"* function has been built into the HC5500 to allow you to use your computer's web browser to monitor and control print jobs. This function further expands network printing possibilities.

* For Windows®, Internet Explorer version 6.0 or higher is required. For the Mac OS®, Internet Explorer version 5.0 or higher is required.

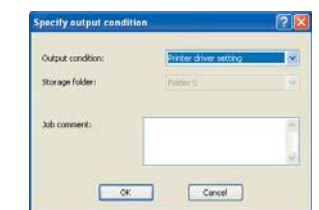
Monitoring HC5500

You can monitor the HC5500 usage status, as well as the amount of remaining consumables such as paper, ink, and the like. Used as a shared printer, you can check on the printer status from your computer without leaving the comfort of your chair, even if the printer is located far away.

This information can be saved on your computer as a CSV file and viewed and edited using spreadsheet software such as Microsoft Excel®. By understanding the operating conditions under which HC5500 is being used, you can more efficiently manage operations, and make the correct inter-departmental charges.

Adding Print Direction Comments to Print Data

You can add comments to the data being sent to the print manager. You can add comments like what paper type and colour to use, size, warnings, and the name of the sender.



Managing Print Jobs

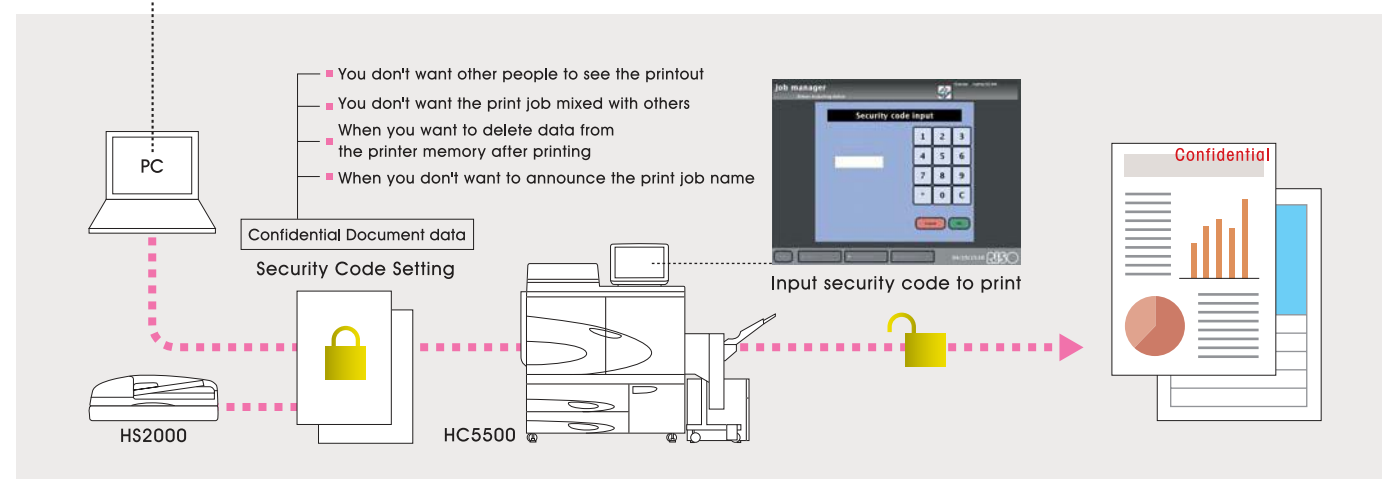
Data storage and form registration and management can be done from your desktop computer. Use the Job Manager to reprint stored data and forms and display the status of a job. If frequently used data and print conditions are saved together, the job can be reprinted using the same print conditions just by selecting that saved data. This handy feature reduces the time required to modify driver settings during a print.

Obtaining Accounting Information

Display the history of jobs printed by HC5500. This function allows you to obtain accounting information such as the paper type, pagination, details of optional processing, the actual number of copies printed, job comments, and the like.

Convenient touch panel

Various convenient functions are available on LCD touch panel (Optional).
Job manager: the status of job processed by the HC5500 is displayed.
Monitoring function: possible to check the printer status, remaining volume of the consumables, etc...
Paper jam location display: If a paper jam occurs in the Finisher or in the printer, printing stops and the jam location is indicated.



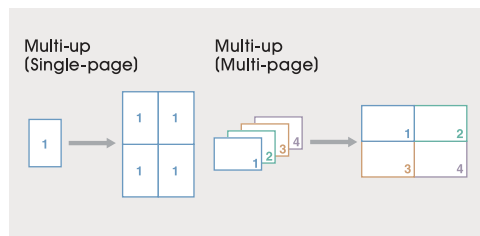
Wide-ranging functions for multipurpose use

HC5500

Complete control to create documents the way you want them

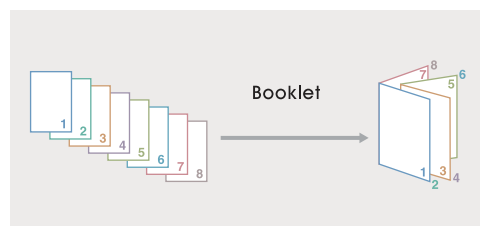
Use the Printer Driver to Adjust the Original Data

The print direction rotation, position adjustment and data enlargement/shrinking to match the paper size can all be set from the printer driver.



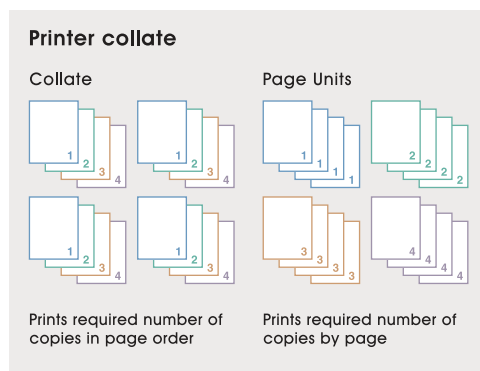
Multi-up (Single) / Multi-up (Plural) Combines Multiple Pages on One Sheet in an Easy-to-See Format

This function allows multi-up (single) printing by reducing the size of the original and printing multiple copies on one sheet of paper, as well as allowing multi-up (plural) printing by printing multiple pages on one sheet of paper. This function allows you to reduce the number of printed pages to conserve paper, and is useful in compactly combining bulky documents into an easy-to-read format.



Use the Booklet Setting to Easily Create Paged Documents

Create a double-sided two-page paginated spread without using an application. This function lets you print multiple-page documents such as booklets and pamphlets.



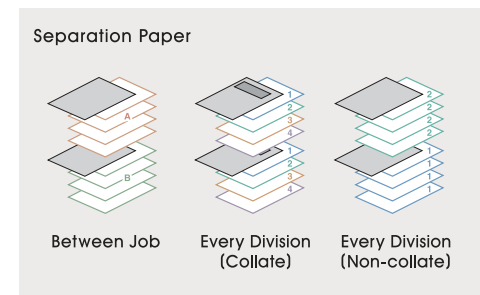
Use Printer Collate to Select the Print Units of Paginated Documents

The printer collate function is divided into "Collate" and "Page Units". Use "Collate" to print the required number of copies in page order. Use "Page Units" to print the required number of copies for each page. Select one or the other depending on the printed material being created. Paginated items are normally set to print as collated. This function allows conference materials etc. to be quickly prepared.

Job Separation Function Automatically Inserts Separation

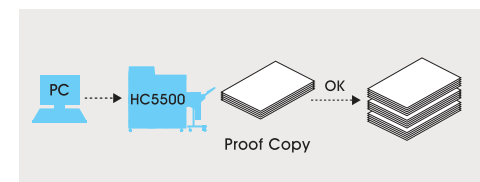
A separator page can be inserted to separate each job, or for every division of collated copies and page units. A previously prepared cover sheet can also be inserted. This function allows you to easily complete the normally tiresome task of job separation.

*When you use the job separation function, you cannot print onto the separator or cover sheets.



Use the "Proof Copy" function to Proof Job before Printing

This function allows you to proof a copy prior to printing multiple copies. It lets you proof the layout, binding margin, finisher settings prior to printing the entire job, and can eliminate paper waste due to improper settings.

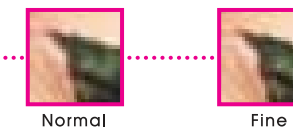


Select Line-based or Photo-based Modes to Match the Original

You can economically print business documents containing mainly text by selecting the "Line-based" mode. You can also print sharp copies of flyers that incorporate images and graphics by selecting "Photo-based" mode. Use the mode that is appropriate to the original being copied.

Fine Printing for Clearer Images

Create crisp images by selecting the "Fine" print setting. You can also modify the finished image by manually selecting the ink's maximum drop number.



Gamma Control to Adjust Contrast, Lightness, and Saturation

The contrast, lightness and saturation of the original image can be adjusted. This is a useful function for reproducing clear images and images that better match the original.

* Only available on the HC3R-5000.

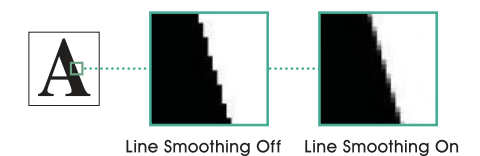
Two Half-tone Processing Methods to Match the Photo

The printer does halftone processing of images (screening) in two ways: "error diffusion" and "dot screen" processing. In "error diffusion", gradation is achieved through differing dot densities. In "dot screen (70lpi/100lpi)", gradation is achieved by modifying the dot size. Achieve beautiful print results by using the processing method that best fits the image being printed. For example, use error diffusion for full colour images and dot screen processing for black and white images or images with few colours.

Line Smoothing for Smooth Font Rendering

If text or illustration contours appear jagged, use the line smoothing process to correct the problem and create a smooth look.

* Use of the line smoothing function will decrease printer speed.



Easily Adjust Settings with the Main Operation Panel

An operation panel is built into the printer body. This allows the user to execute operations from both a PC's printer driver as well as from the printer itself. Once the print position and density have been adjusted with the main operation panel, a test print can be output to check the print job.



additional copies of the same flyer etc. You can turn the "save data" setting off when printing confidential documents so that the print data does not remain in the memory.

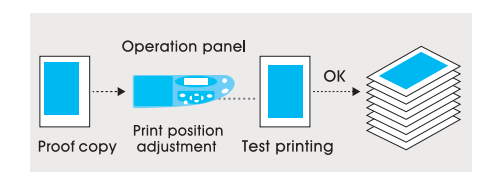
Adjust the Print Position Even After Starting a Print Job

The print position can also be adjusted from the main operation panel. You can adjust the position in 0.5mm increments between 0mm to 20mm from the top and bottom, and left and right. You can even make changes after a print job has started, without having to modify any computer settings. The ability to change settings allows the user to continue



working efficiently. Once a position has been adjusted, you can check the finished results using a test print.

* When printing page data, the adjustment is applied to the sheet that was last printed.



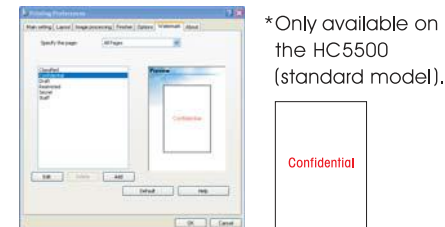
The power to process documents fast

HC5500

Dedicated controllers put high-speed processing power at your service



"Circulate". This function eliminates the need to stamp documents after they have been printed. You can also freely change the watermark placement. Additional watermarks can also be registered.



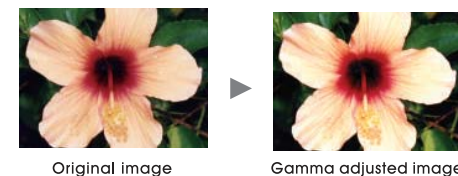
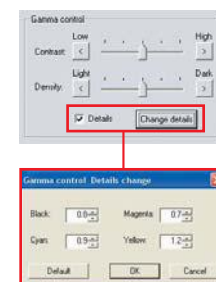
*Only available on the HC5500 (standard model).

DTP Data Compatibility PS7R-9000

The HC5500 is installed with a specialized RIP system that uses Adobe® PostScript®3™, making it possible to print postscript data created using DTP software. There are two types of RIP, the PS model's PS7R-5000 and the comparatively higher performance HG model's PS7R-9000. It comes with 139 western and 2 Japanese fonts. Commercially available PS fonts can also be installed. This function lets you print promotional flyers with multiple images and pamphlets with many pages without the bother of a computer.

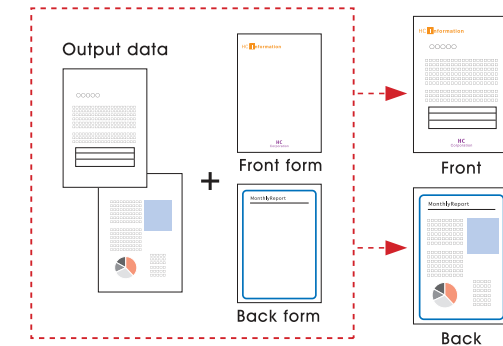
Gamma Adjustment for Setting Image Contrast and Density PS7R-9000

You can adjust the contrast and density of images that are ill-defined, too light or too dark to one of 5 different levels. You can also make additional fine adjustments for each CMYK colour (numerical value range 0.1 to 3.0) from "Details". This allows you to adjust the images to your preference.



Form Function for Combining and Printing Forms PS7R-9000

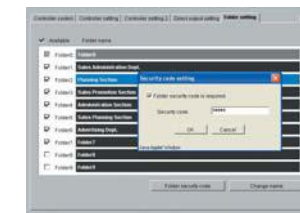
Frequently used data, like company/ manufacturer logos, branded character marks, letterhead etc. can be registered as a set form. You can select and setup a form so that the original data is combined with and printed out as a form. Use this handy function to create newsletters, internal memos, and POP required a consistent format. Duplex data can also be combined separately with forms on the front and back of sheets.



"Single side overlay" + "Specify Front and Back respectively"

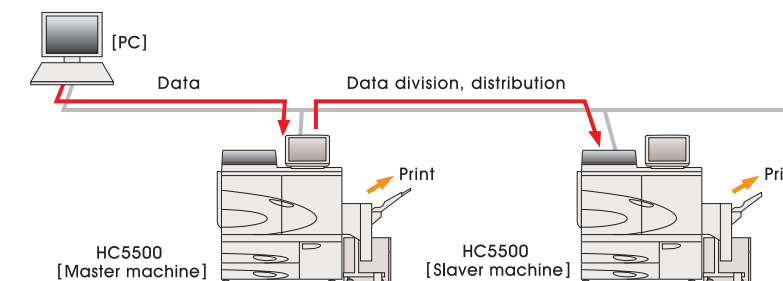
Use Folder Security Code Settings to Manage Security by Department PS7R-9000

You can assign a security code not only to specific data, but to a folder as well (up to 9). Create a password-protected folder for each of the various sections for smarter security management.



Clustering Function for Efficient Job Distribution PS7R-9000

If multiple HC5500 units are networked together, a clustering (load distribution processing) function can be used to allocate print jobs from a printer unit that is busy to another HC5500 unit that is currently idle. A single job can also be divided and processed in parallel on two machines. This further increases the efficiency of print operations. A maximum of 4 HC5500 units can be registered to the master machine.



HG Model Quickly Processes High Volume Data and Multiple Pages PS7R-9000

HG Model Quickly Processes High Volume Data and Multiple Pages The HG model of the dedicated RIP PS7R-9000 uses an Intel® Pentium®4 CPU to quickly process even large amounts of data. Its high volume hard disc and memory allow high volume and multiple-page data to be efficiently printed. Its large volume hard disc also handles extensive data storage.

Switch Single-page Data to Efficiently Process Variable Print Jobs PS7R-9000

Use this function to switch out DM content to match customer information and address printing for invitations and the like. The HG model allows data to be switched out page by page and printed, making it the perfect solution for variable print jobs. This is an important tool for "One to One" marketing.

*More efficient printing can be achieved using a variable print application that is compatible with post script. Please contact a sales representative for further details.
*Print speed may slow with increased volume.

Archive Function to Save RIP Data PS7R-9000

The printer is equipped with a function to save jobs to an archive as RIP data. You can print saved jobs from the job manager, eliminating the need to open RIP and allowing print time to be shortened. This is a handy function for jobs requiring significant reprinting.



Archive

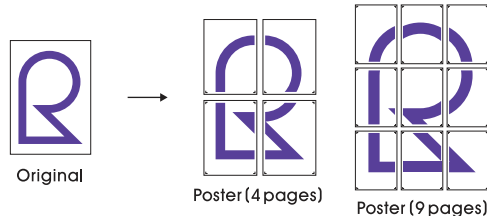
Poster Function to Separate and Output Enlarged Data* HC3R-5000

If you want to create a poster, the original can be separated into several sections, enlarged (up to a maximum of 9 A3-size pages) and then connected together as a large poster. The "Registry Guides" can also be printed as a guide for attaching the sheets together.

*Only available on the HC5500 (standard model).

Useful Watermark Printing for Internal Documents HC3R-5000

Use the watermark function to print watermarks like "Important", "Urgent" and



Auto finishing completes the job

HC5500

A full range of auto finishing functions gives documents the professional look

RISO Auto Control Stacking Tray II



RISO Auto Control Stacking Tray II Specifications

Function	Auto stuck guide control
Paper Size	100mm x 148mm – 320mm x 432mm*2
Paper Weight	46g/m ² – 210g/m ²
Tray Capacity	1,000 sheets*3
Unit Weight	7kg

*2 Paper that can be used for offset output: W131 x L148mm – W305 x L402mm.

*3 For 85g/m² paper.

HC Auto Stacker



(LCD touch panel is optional.)

HC Auto Stacker*1 Specifications

Function	Offset Output
Paper Size	100mm x 148mm – 305mm x 432mm*4
Paper Weight	46g/m ² – 210g/m ²
Tray Capacity	A4R/A4/B5R/B5: 1,150 sheets, A3/B4: 500 sheets*3
Unit Weight	19.9kg

*1 When connecting the HC Auto Stacker, maximum print speed will be 115ppm. (For A4 size, long-edge feed, printing in standard mode).

*3 For 85g/m² paper.

*4 When using paper larger than 320 x 432mm, fold the stuck guide before printing.

HC Finisher



HC Center Binding Finisher System

Adding to the HC finisher system functionality, center binding and 2-folding are now possible. The center binding finisher system can handle 60 pages (15 sheets)*1 of booklet creation and 20 pages (5 sheets)*1 of dual fold processing. Up to 2,000 sheets of paper*2 can be loaded in the stacking tray.

*1 For 85g/m² paper. For booklets (center bind) that exceed 60 pages and 2-fold jobs that exceed 20 pages, separate volume settings can be made.

*2 Dependent on paper size and weight.



Punching Function
Stapling Function
Booklet Making Function
Folding Function

RISO HC Finisher Specifications

RISO HC Finisher	Paper Size	Top Tray	100mm x 148mm – 330mm x 488mm
		Stacking Tray	182mm x 257mm – 330mm x 488mm
		Booklet Tray	210mm x 279mm – 316mm x 457mm
	Paper Weight	Top Tray	46g/m ² – 157g/m ² (Cover Sheet: 46g/m ² – 220g/m ²)
		Stacking Tray	46g/m ² – 157g/m ² (Cover Sheet: 46g/m ² – 220g/m ²)
		Booklet Tray	60g/m ² – 90g/m ² (Cover Sheet: 46g/m ² – 220g/m ²)
	Tray Capacity*1	Top Tray	500 Sheets
		Stacking Tray	2,000 Sheets, 200 Units (A4 Landscape, B5 Landscape) 1,500 Sheets, 100 Units (Other)
		Booklet Tray	20 Units
	Cover Sheet Tray*1	Paper Size	A3/B4/A4 Landscape / A4/B5 Landscape / B5
		Tray Capacity	200 Sheets
	Staple	Paper Weight	60g/m ² – 220g/m ²
		Paper Capacity	100 Sheets*1
		Paper Size	257mm x 182mm – 297mm x 420mm
	Punch	Position	Front: 1 position (tilt, vertical), Rear: 1 position (tilt, vertical), 2 positions (parallel)
Paper Size		A3/B4/A4 Landscape / A4/B5 Landscape (2 holes) A3/A4 Landscape (4 holes)	
# of hole		2/4 holes	
Booklet Making	Paper Weight	46g/m ² – 157g/m ²	
	Booklet with staple	15 sheets (60 pages)	
	Folding	5 sheets (20 pages)	
Unit Size		1,353(W) x 725(D) x 1,165(H)mm	
Unit Weight		143kg	
Power Supply		AC100 – 120 / 220 – 240V, 50/60Hz, 2.0/1.0A or more	
Power Consumption		175W (in use), 30W (stand by), 1W or less (sleep)	

*1: in case of 85g/m².

RISO Scanner HS2000 Specifications

RISO Scanner HS2000	Type	Desktop colour image scanner with Automatic Document Feeder
	Scanner Mode	Colour and monochrome
	Maximum Scan Range	303mm x 432mm
	Optical Resolution	600dpi
	Auto Feeder Speed	Page scan speed: 20ppm or more
	First Page Print Time	20 seconds or less
	Scan Speed	66.144mm/sec (standard)
	Analog-to-Digital Conversion	8 bit
	Image Sensor	CCD
	Light Source	White xenon lamp
	Colour Separation	RGB colour sensor
	Image Processing Mode	Line (text), Line and photo, Photo
		Standard, Fine
	Function	Reproduction size, Output mode (Copy, Copy & Storage, Storage), Duplex printing, Pagination (Multi-up (Single), Multi-up (Plural), Booklet), Optional finisher functions, Screening (Error diffusion, Dot screen), Gamma control, Character recognition, Edge enhancement, Moire elimination, Base colour level, Register initial values, Job separation, Printer collate, Proof copy
	Automatic Document Feeder	Type
	Original size	Front: Postcard – A3/Ledger Back: 182mm x 128mm – A3/Ledger
	Paper quality	52g/m ² – 128g/m ²
	Original capacity:	80g/m ² or less: 100pages or less
	Smaller than B4(Ledger)	81g/m ² or more: Loading height maximum is 15mm or less
	Original capacity:	80g/m ² or less: 60pages or less
	B4(Ledger) or larger	81g/m ² or more: Loading height maximum is 9mm or less
Operating Noise		68 dB or less
Power Source		100 – 127V/200 – 240V~, 1.0/0.6A, 50/60Hz
Power Consumption		100V: 100W or less, 200V: 120W or less
Weight		Approximately 27kg
Dimensions(WxDxH)		642mm x 551mm x 247.5mm

Specifications are subject to change without notice. Details may vary depending on the region.